



**Ministry of Social Affairs of Estonia,  
Department of Health Information and  
Analysis**

**Health Statistics and Medical Technologies  
State Agency of Latvia,  
Health Statistics Department**

**Lithuanian Health Information Centre**

***Health in the Baltic Countries***  
***2005***

***14-th edition***

**2006**

UDK 61 (474.2 + 474.3 + 474.5) (083)

He - 04

ISBN 9984-695-07-7

**Preface**

In the 14<sup>th</sup> edition “Health in the Baltic Countries 2005” there are presented the latest data of health statistics in the Baltic Countries – Republic of Estonia, Republic of Latvia and Republic of Lithuania. The most important figures of population health – demographics, mortality causes, spread of several diseases as well as health care resources and utilization – are included in the publication.

Annual and special reports of medical institutions, computerized health databases and registers are the basic data sources. Some data of vital statistics come from the official publications of the state statistics offices of the Baltic Countries.

This publication is a joint issue of Ministry of Social Affairs of Estonia, Department of Health Information and Analysis, Health Statistics and Medical Technologies State Agency of Latvia and Lithuanian Health Information Centre. These institutions can provide more comprehensive data if necessary.

**Population at 01.01.2006**

	<b>Estonia</b>	<b>Latvia</b>	<b>Lithuania</b>
<b>Population (thousand)</b>	1344.7	2294.6	3403.3
<b>Per 1 km<sup>2</sup></b>	30.0	35.5	52.1
<b>Urban (thousand)</b>	932.3	1559.4	2268.8
<b>%</b>	69.3	68.0	66.7
<b>Rural (thousand)</b>	412.4	735.2	1134.5
<b>%</b>	30.7	32.0	33.3
<b>Males (thousand)</b>	619.3	1057.3	1586.7
<b>%</b>	46.1	46.1	46.6
<b>Females (thousand)</b>	725.4	1237.3	1816.6
<b>%</b>	53.9	53.9	53.4
<b>Under working age (%)</b>	16.5	14.3	18.0
<b>Working age (%)</b>	63.9	64.4	62.4
<b>Over working age (%)</b>	19.6	21.3	19.6
<b>Working age</b>			
<b>Males</b>	16-63	15-61	16-62
<b>Females</b>	16-60	15-59	16-59

## Health in the Baltic countries

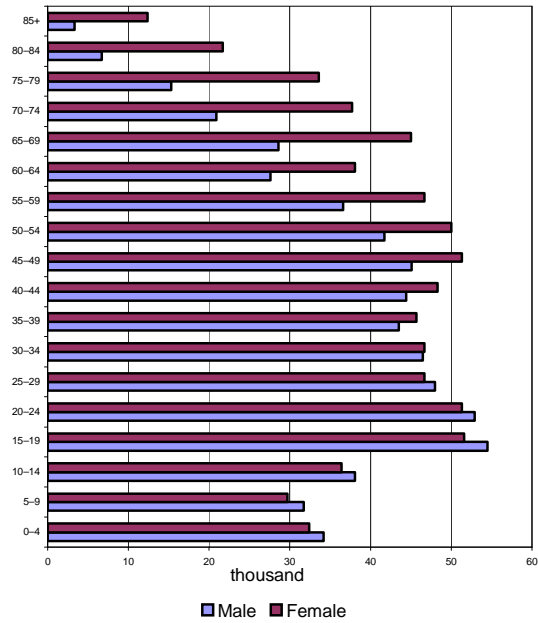
### General data

	Estonia	Latvia	Lithuania
Official name of the state	Republic of Estonia (Eesti Vabariik)	Republic of Latvia (Latvijas Republika)	Republic of Lithuania (Lietuvos Respublika)
Independence Day	24 February (1918)	18 November (1918)	16 February (1918)
State's governing body	Parliament (Riigikogu), 101 members, elected for the period of 4 years	Parliament (Saeima), 100 members, elected for the period of 4 years	Parliament (Seimas), 141 members, elected for the period of 4 years
Governmental structure	Republic, the President is elected for the period of 5 years	Republic, the President is elected for the period of 4 years	Republic, the President is elected for the period of 5 years
Area (thousand km <sup>2</sup> )	45.2	64.6	65.3
Major islands	Saaremaa, 2671 km <sup>2</sup> Hiiumaa, 989 km <sup>2</sup> Muhu, 198 km <sup>2</sup>	-	-
Major rivers	Võhandu, 162 km (through lake Tamula) Pärnu, 144 km Põltsamaa, 135 km	Daugava, 1005 km Gauja, 452 km Venta, 346 km	Nemunas, 937.4 km Neris, 509.5 km Venta, 346 km
Major lakes	Peipsi, 3555 km <sup>2</sup> (in Estonia 1529 km <sup>2</sup> ) Võrtsjärv, 271 km <sup>2</sup> Narva veehoidla (artificial lake) 191 km <sup>2</sup> (in Estonia 38 km <sup>2</sup> )	Lubāns, 80.7 km <sup>2</sup> Rāzna, 57.6 km <sup>2</sup> Engure, 40.5 km <sup>2</sup>	Drūkšiai, 44.8 km <sup>2</sup> Dysnai, 24.4 km <sup>2</sup> Dusia, 23.3 km <sup>2</sup>
The highest point	Suur Munamägi, 318 m	Gaiziņkalns, 311.6 m	Juozapinė, 293.6 m
Average daily temperature in January 2005	-1.1 °C	-0.1 °C	+0.2 °C
Average daily temperature in July 2005	+18.4 °C	+19.3 °C	+18.8 °C
Administrative units	15 counties, 33 cities, 14 cities without municipal status, 194 rural municipalities	26 counties, 26 districts, 77 cities and towns, 444 rural municipalities	10 counties, 106 cities and towns, 56 rural municipalities
Capital, inhabitants (thousand)	Tallinn 396.2*	Riga 731.8*	Vilnius 553.5*
Official language	Estonian	Latvian	Lithuanian
National currency	Estonian kroon=100 sents 1 EEK = 0.064 EUR	Latvian lats=100 santims 1 LVL = 1.423 EUR	Lithuanian lits=100 centas 1 LTL = 0.290 EUR

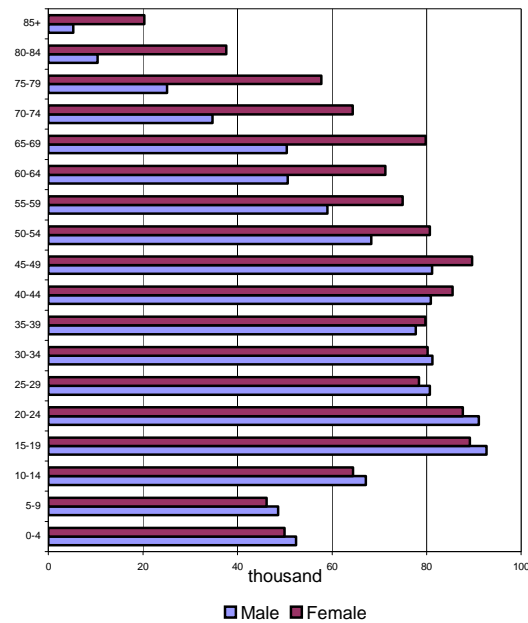
\* Population - beginning of 2006

## Health in the Baltic countries

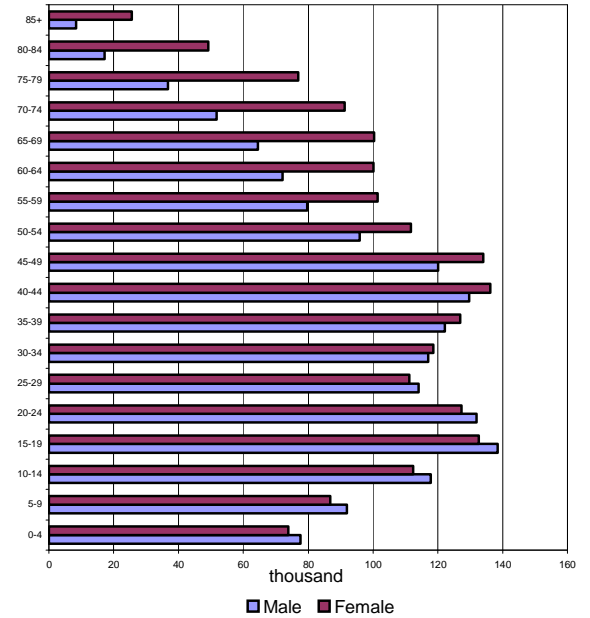
### Population by age at 01.01.2006



**Estonia**

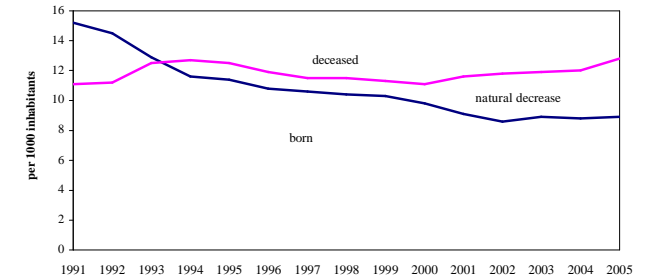
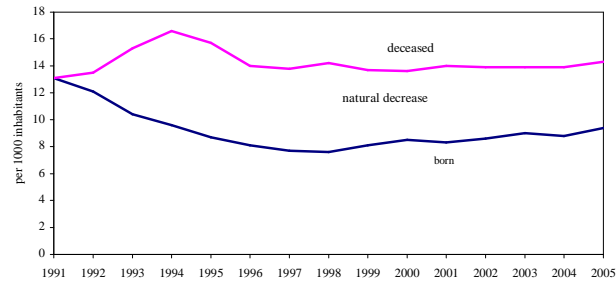
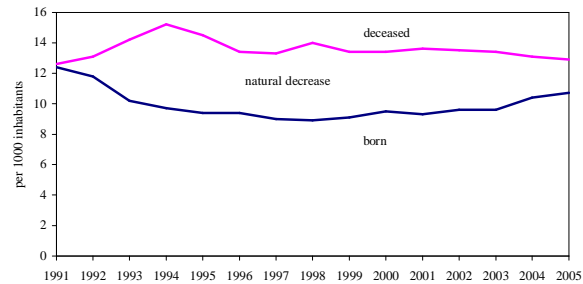


**Latvia**



**Lithuania**

### Trends of demographics indicators



**Health in the Baltic countries**

**Resident population by age and sex at 01.01.2006**

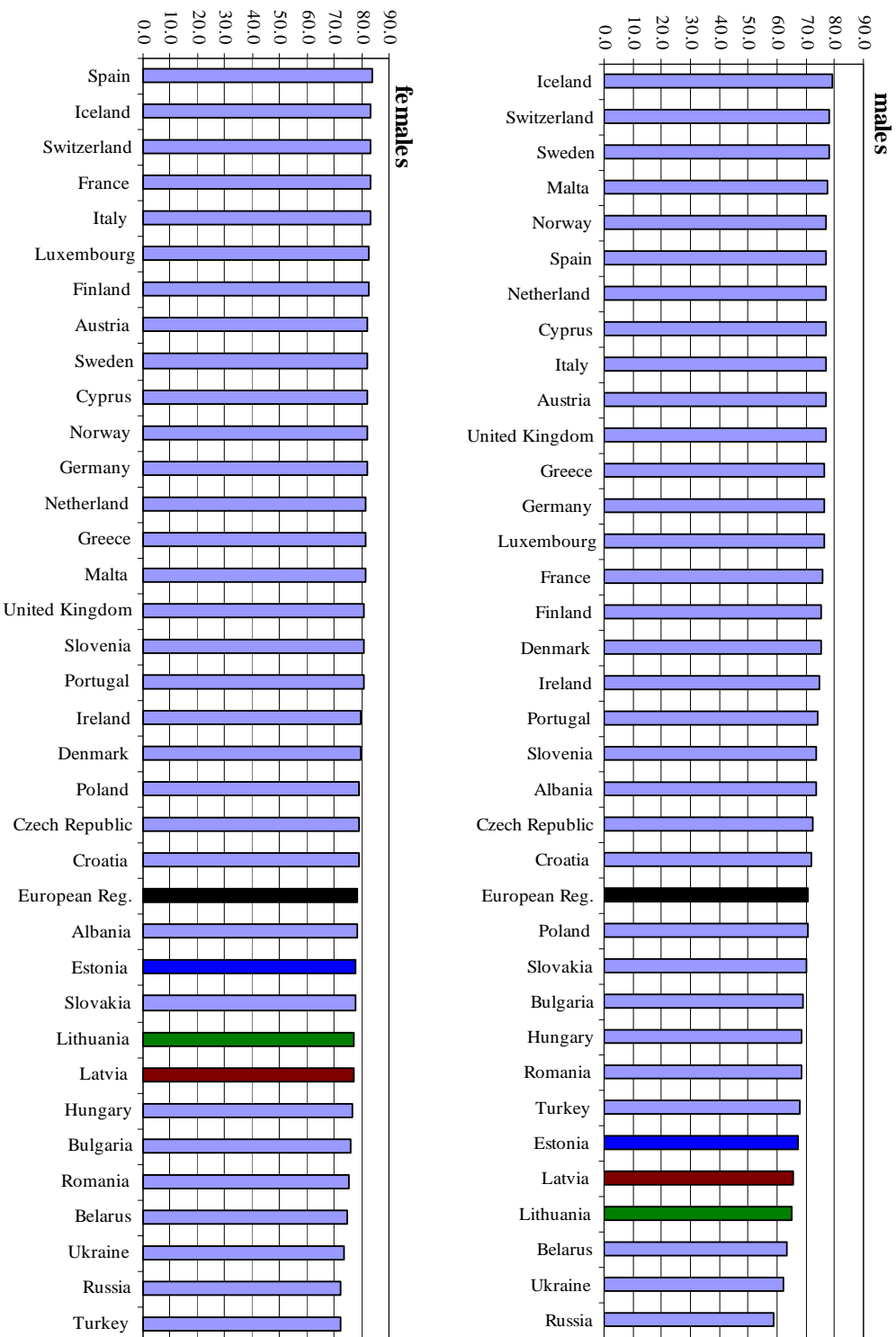
	Estonia						Latvia						Lithuania					
	Total		Males		Females		Total		Males		Females		Total		Males		Females	
	Number	%	Number	%	Number	%	Number	%	Number	%	Number	%	Number	%	Number	%	Number	%
Total	1344684	100.0	619299	100.0	725385	100.0	2294590	100.0	1057284	100.0	1237306	100.0	3403284	100.0	1586650	100.0	1816634	100.0
0-4	66534	4.9	34170	5.5	32364	4.5	102257	4.5	52340	5.0	49917	4.6	151504	4.5	77642	4.9	73862	4.1
5-9	61403	4.6	31697	5.1	29706	4.1	94753	4.1	48590	4.6	46163	3.7	178684	5.3	91969	5.8	86715	4.8
10-14	74492	5.5	38121	6.2	36371	5.0	131537	5.7	67128	6.3	64409	5.2	230205	6.8	117779	7.4	112426	6.2
15-19	106078	7.9	54452	8.8	51626	7.1	181819	7.9	92715	8.8	89104	7.2	271074	8.0	138456	8.7	132618	7.3
20-24	104125	7.7	52869	8.5	51256	7.1	178741	7.8	91072	8.6	87669	7.1	259143	7.6	131841	8.3	127302	7.0
25-29	94692	7.0	4954	7.7	46738	6.4	159042	6.9	80666	7.6	78376	6.3	225350	6.6	114124	7.2	111226	6.1
30-34	93170	6.9	46514	7.5	46656	6.4	161475	7.0	81219	7.7	80256	6.5	235563	6.9	116951	7.4	118612	6.5
35-39	89218	6.6	43506	7.0	45712	6.3	157399	6.9	77685	7.3	79714	6.4	249039	7.3	122108	7.7	126931	7.0
40-44	92724	6.9	44432	7.2	48292	6.7	166379	7.3	80903	7.7	85476	6.9	265783	7.8	129576	8.2	136207	7.5
45-49	96327	7.2	45077	7.3	51250	7.1	170784	7.4	81172	7.7	89612	7.2	254253	7.5	120106	7.6	134147	7.4
50-54	91698	6.8	41662	6.7	50036	6.9	149003	6.5	68281	6.5	80722	6.5	207628	6.1	95901	6.0	111727	6.2
55-59	83240	6.2	36531	5.9	46709	6.4	133888	5.8	59004	5.6	74884	6.1	181105	5.3	79666	5.0	101439	5.6
60-64	65661	4.9	27561	4.5	38100	5.3	121884	5.3	50605	4.8	71279	5.8	172141	5.1	72090	4.5	100051	5.5
65-69	73552	5.5	28548	4.6	45004	6.2	130122	5.7	50373	4.8	79749	6.4	164802	4.8	64495	4.1	100307	5.5
70-74	58580	4.4	20853	3.4	37727	5.2	99047	4.3	34675	3.3	64372	5.2	143074	4.2	51746	3.3	91328	5.0
75-79	48855	3.6	15276	2.5	33579	4.6	82795	3.6	25104	2.4	57691	4.7	113606	3.3	36639	2.3	76967	4.2
80-84	28434	2.1	6691	1.1	21743	3.0	48042	2.1	10447	1.0	37595	3.0	66427	2.0	17216	1.1	49211	2.7
85+	15645	1.2	3250	0.5	12395	1.7	25623	1.1	5305	0.5	20318	1.6	33903	1.0	8345	0.5	25558	1.4
Unknown	256	0.0	135	0.0	121	0.0	-	-	-	-	-	-	-	-	-	-	-	-

**Health in the Baltic countries**

**Natality, general mortality and natural increase per 1000 population**

Years	Estonia			Latvia			Lithuania		
	Natality	General mortality	Natural increase	Natality	General mortality	Natural increase	Natality	General mortality	Natural increase
1940	16.1	17.0	-0.9	19.3	15.7	3.6	23.0	13.0	10.0
1950	18.4	14.4	4.0	17.6	12.9	4.7	23.6	12.0	11.6
1960	16.6	10.5	6.1	16.7	10.0	6.7	22.5	7.8	14.7
1965	14.8	10.6	4.2	13.8	10.1	3.7	18.1	7.9	10.2
1970	16.0	11.2	4.8	14.6	11.3	3.3	17.7	8.9	8.8
1975	15.0	11.6	3.4	14.2	12.2	2.0	15.7	9.5	6.2
1980	14.9	12.4	2.5	14.1	12.8	1.3	15.2	10.5	4.7
1985	15.5	12.6	2.9	15.4	13.2	2.2	16.5	11.1	5.4
1990	14.2	12.4	1.8	14.2	13.1	1.1	15.4	10.8	4.6
1991	12.4	12.6	-0.2	13.1	13.1	0.0	15.2	11.1	4.1
1992	11.8	13.1	-1.3	12.1	13.5	-1.4	14.5	11.2	3.3
1993	10.2	14.2	-4.0	10.4	15.3	-4.9	12.9	12.5	0.4
1994	9.7	15.2	-5.5	9.6	16.6	-7.0	11.6	12.7	-1.1
1995	9.4	14.5	-5.1	8.7	15.7	-7.0	11.4	12.5	-1.1
1996	9.4	13.4	-4.0	8.1	14.0	-5.9	10.8	11.9	-1.1
1997	9.0	13.3	-4.3	7.7	13.8	-6.1	10.6	11.5	-0.9
1998	8.8	14.0	-5.2	7.6	14.2	-6.6	10.4	11.5	-1.1
1999	9.0	13.4	-4.4	8.1	13.7	-5.6	10.3	11.3	-1.0
2000	9.5	13.4	-3.9	8.5	13.6	-5.1	9.8	11.1	-1.3
2001	9.3	13.6	-4.3	8.3	14.0	-5.7	9.1	11.6	-2.5
2002	9.6	13.5	-3.9	8.6	13.9	-5.3	8.6	11.8	-3.2
2003	9.6	13.4	-3.8	9.0	13.9	-4.9	8.9	11.9	-3.0
2004	10.4	13.1	-2.7	8.8	13.9	-5.1	8.8	12.0	-3.2
2005	10.7	12.9	-2.2	9.4	14.2	-4.8	8.9	12.8	-3.9

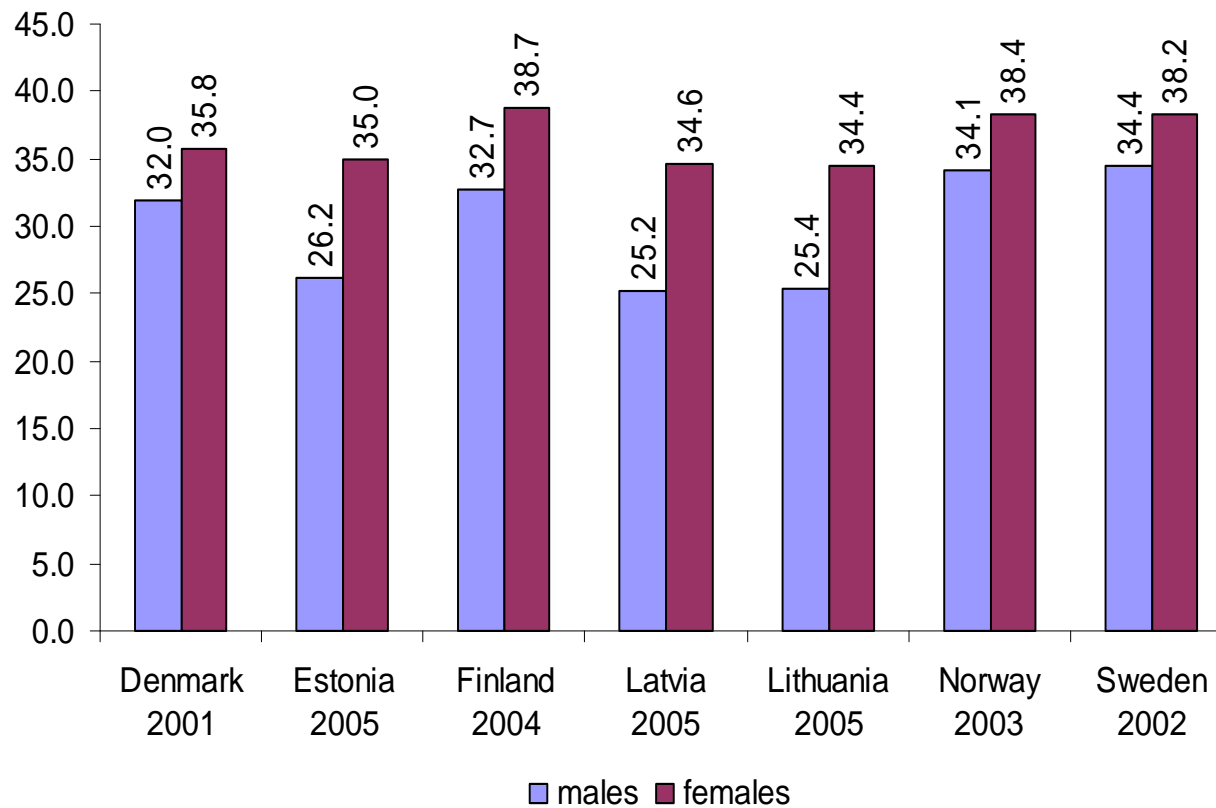
Life expectancy at birth in European countries\*



\* Data for Latvia, Lithuania and Estonia – 2005, other countries 2001-2004



Life expectancy at the age 45 years

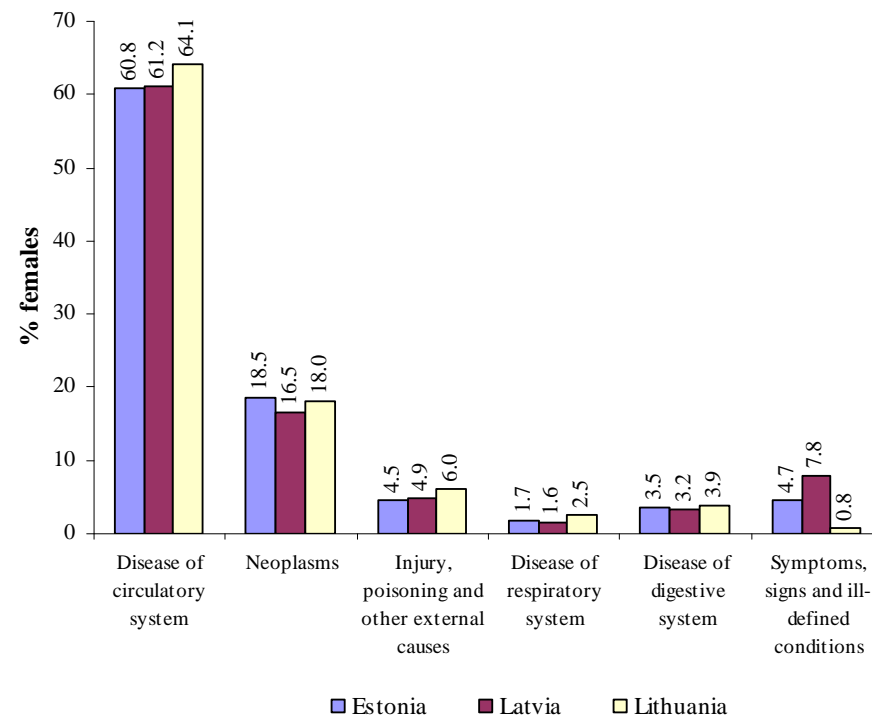
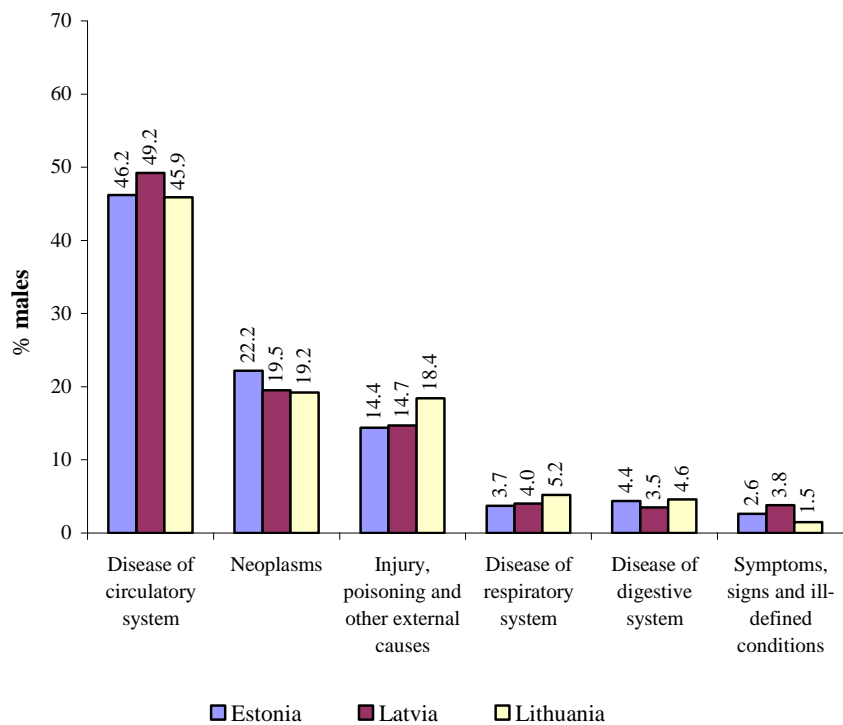


## Health in the Baltic countries

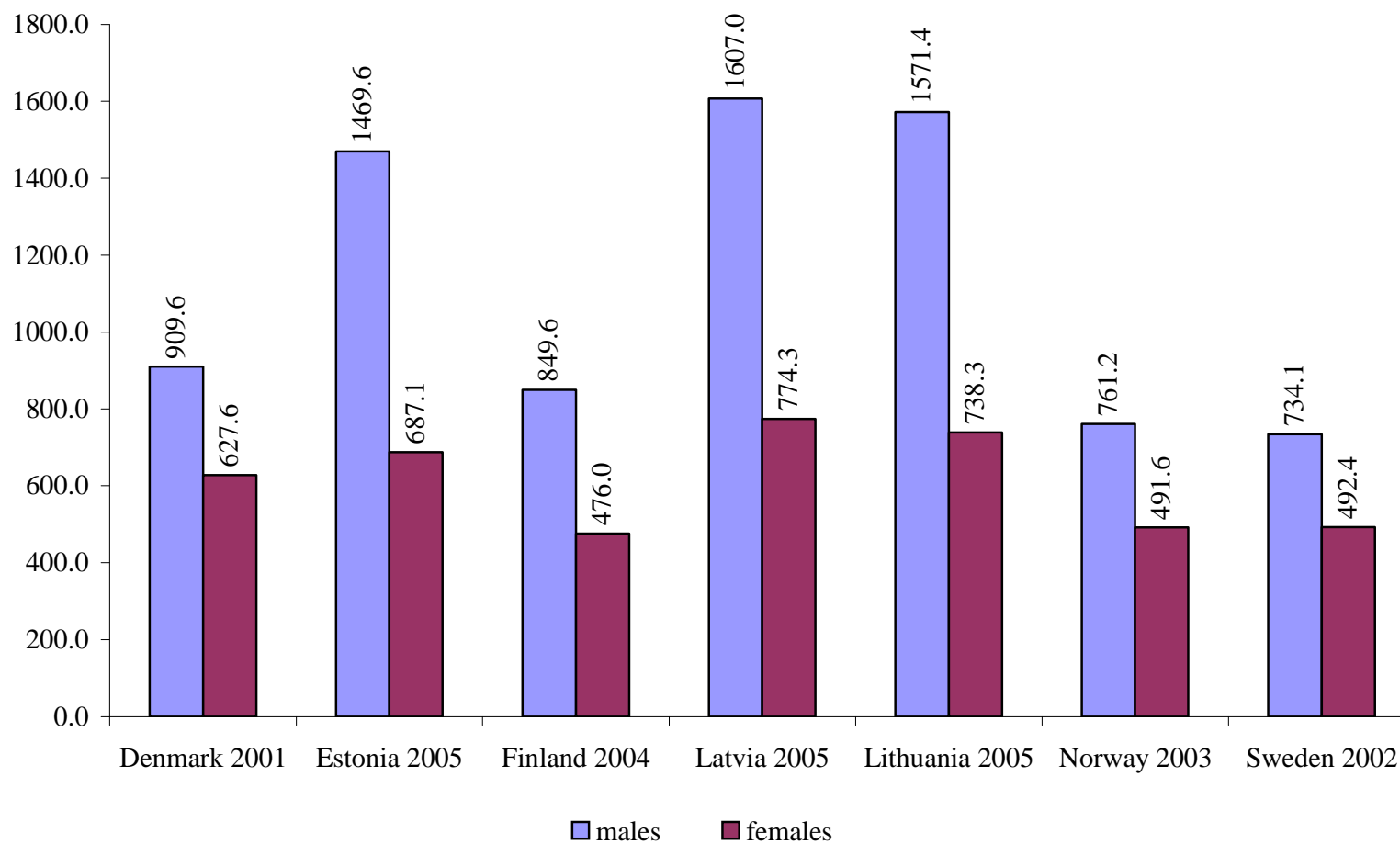
### Deaths by cause per 100,000 population in 2005

Causes of death	Estonia			Latvia			Lithuania		
	Total	Males	Females	Total	Males	Females	Total	Males	Females
Certain infectious and parasitic diseases	8.0	12.3	4.4	12.8	19.0	7.5	14.9	24.6	6.4
Neoplasms	261.9	315.7	215.9	256.5	305.3	214.7	239.1	281.5	202.2
Diseases of the blood and blood-forming organs and certain disorders involving the immune mechanisms	0.7	0.2	1.2	1.4	1.3	1.5	0.9	0.6	1.2
Endocrine, nutritional and metabolic diseases	19.2	15.6	22.3	11.0	9.2	12.6	11.1	10.4	11.7
Mental and behavioural disorders	13.9	21.3	7.6	5.0	6.5	3.7	2.0	3.0	1.2
Diseases of the nervous system	18.8	22.1	16.0	16.3	20.4	12.8	13.0	15.3	10.9
Diseases of the eye and adnexa	0.0	0.0	0.0	0.0	0.0	0.0	0.0	0.0	0.0
Diseases of the ear and mastoid process	0.0	0.0	0.0	0.0	0.1	0.0	0.06	0.06	0.05
Diseases of the circulatory system	685.8	657.8	709.6	785.7	771.9	797.6	697.7	674.1	718.4
Diseases of the respiratory system	35.1	53.4	19.6	40.2	62.9	20.8	50.8	76.8	28.2
Diseases of the digestive system	51.3	63.1	41.2	47.1	54.1	41.1	55.2	68.1	43.9
Diseases of the skin and subcutaneous tissue	1.2	1.1	1.2	1.7	1.4	1.9	0.9	1.0	0.9
Diseases of the musculoskeletal system and connective tissue	4.9	2.6	6.9	2.5	1.7	3.1	2.6	1.4	3.6
Diseases of the genitourinary system	10.8	12.1	9.6	16.2	16.9	15.6	9.1	10.0	8.2
Pregnancy, childbirth and puerperium	-	-	0.3	-	-	0.1	-	-	0.2
Certain conditions originating in perinatal period	2.2	2.7	1.7	3.5	4.1	3.0	2.5	3.1	2.0
Congenital malformations, deformations and chromosomal abnormalities	2.9	2.6	3.2	3.7	4.8	2.8	3.9	4.1	3.8
Symptoms, signs and abnormal clinical and laboratory findings, not elsewhere classified	46.3	36.5	54.7	82.2	59.1	101.9	16.4	23.5	10.1
Injury, poisoning and certain other consequences of external causes	123.2	205.8	52.7	140.2	230.1	63.4	162.5	270.9	67.8
<b>TOTAL</b>	<b>1286.3</b>	<b>1424.8</b>	<b>1168.1</b>	<b>1426.0</b>	<b>1568.7</b>	<b>1304.1</b>	<b>1282.9</b>	<b>1468.5</b>	<b>1120.8</b>

Main causes of death in 2005

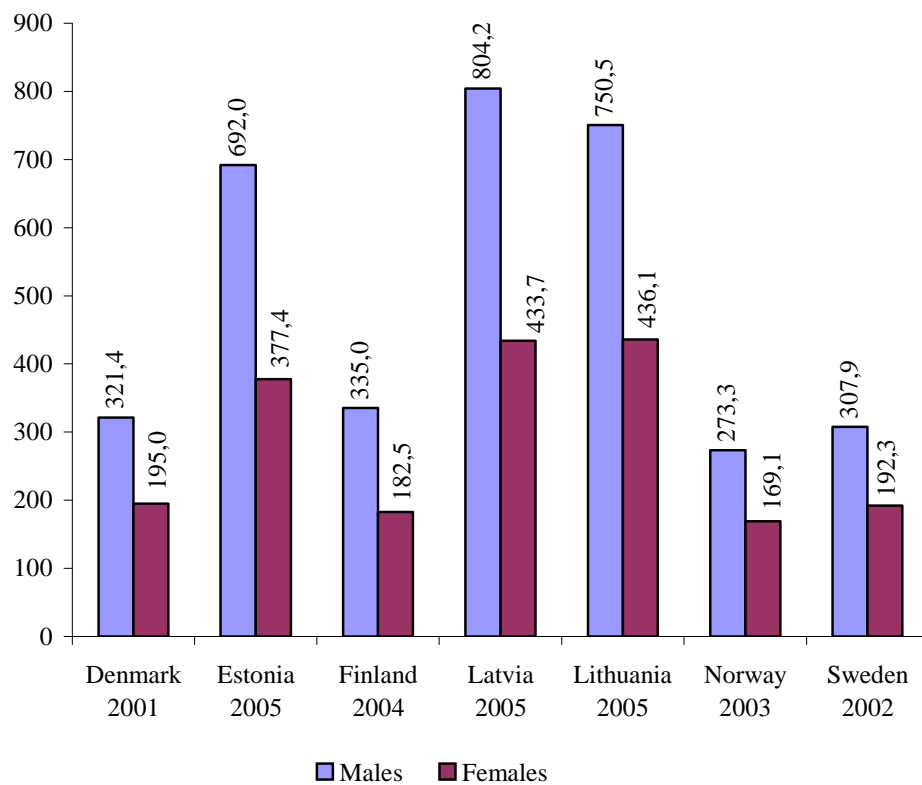


**Age-standardized death rates**  
(per 100,000 European standard population)

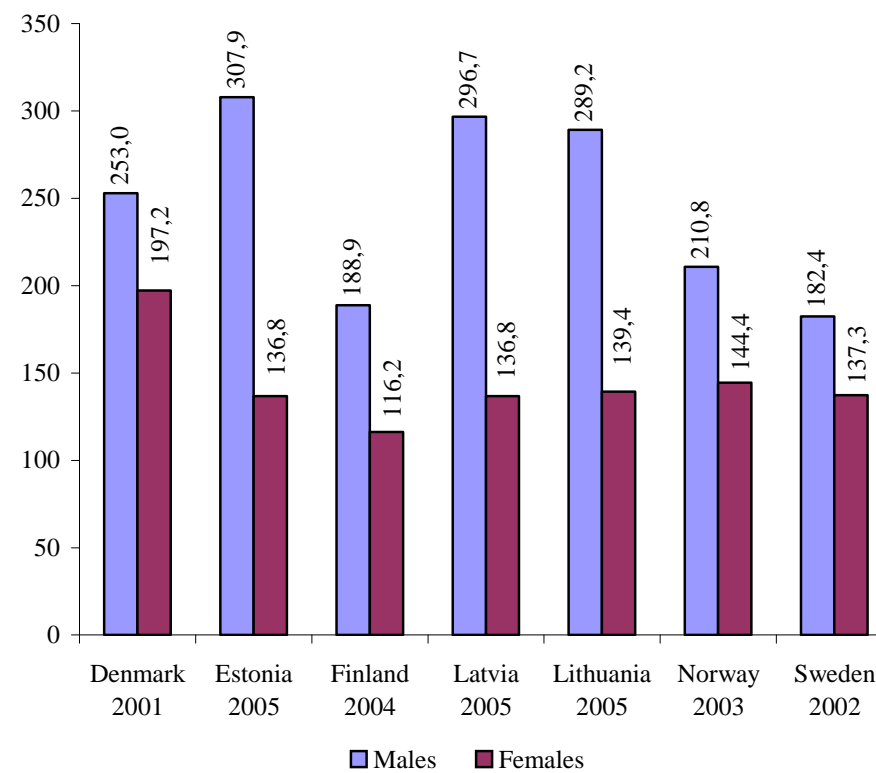


**Age-standardized death rates**  
(per 100,000 European standard population)

**by diseases of the circulatory system**



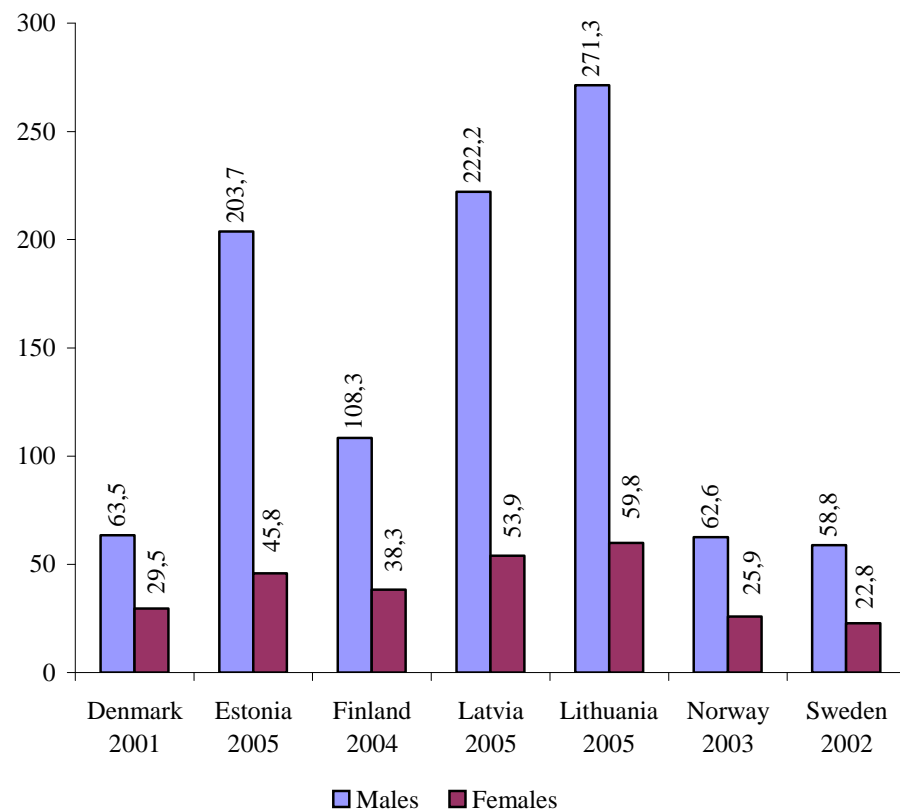
**by malignant neoplasms**



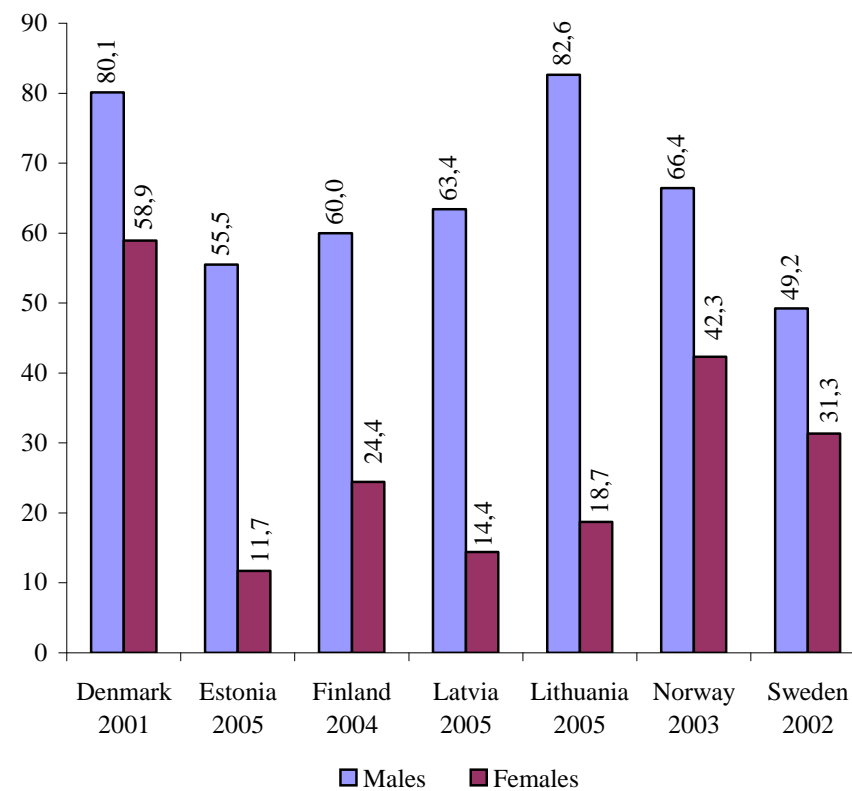
## Health in the Baltic countries

### Age-standardized death rates (per 100,000 European standard population)

#### by accidents, injuries and poisoning



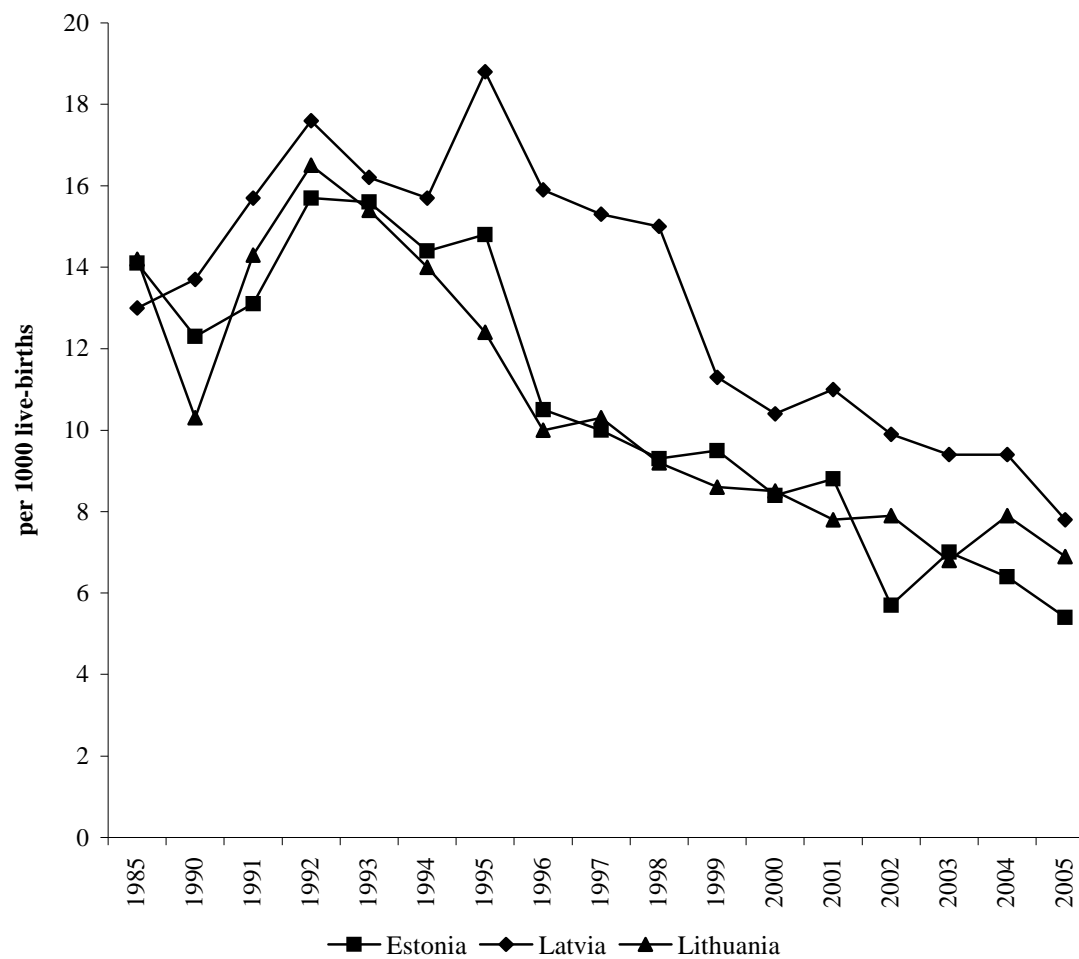
#### by diseases of the respiratory system



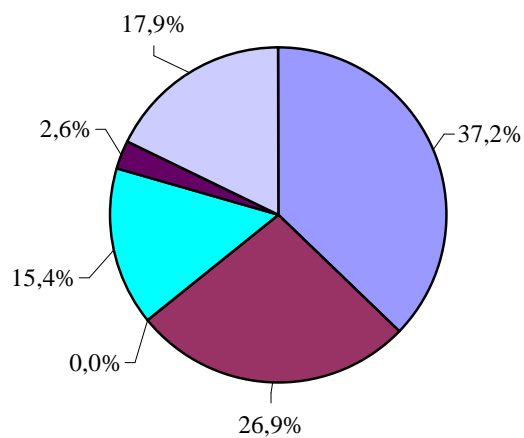
## Health in the Baltic countries

Years	Estonia	Latvia	Lithuania
1935	-	78.9	-
1940	84.9	74.9	98.5
1960	31.6	27.0	46.5
1965	20.3	18.6	35.4
1970	17.7	17.9	19.4
1975	18.2	20.3	19.6
1980	17.1	15.4	14.4
1985	14.1	13.0	14.2
1990	12.3	13.7	10.3
1991	13.1	15.7	14.3
1992	15.7	17.6	16.5
1993	15.6	16.2	15.4
1994	14.4	15.7	14.0
1995	14.8	18.8	12.4
1996	10.5	15.9	10.0
1997	10.0	15.3	10.3
1998	9.3	15.0	9.2
1999	9.5	11.3	8.6
2000	8.4	10.4	8.5
2001	8.8	11.0	7.8
2002	5.7	9.9	7.9
2003	7.0	9.4	6.8
2004	6.4	9.4	7.9
2005	5.4	7.8	6.9

**Infant mortality**  
(per 1000 live-births)

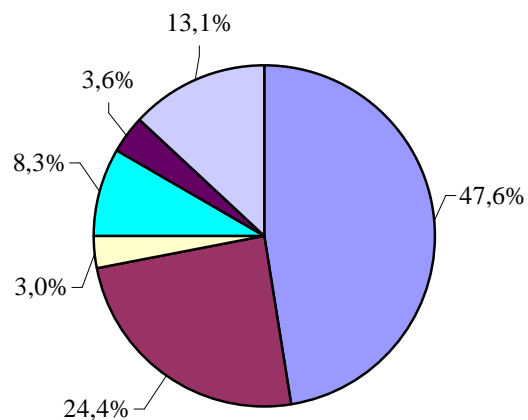


Structure of infant mortality (%) in 2005



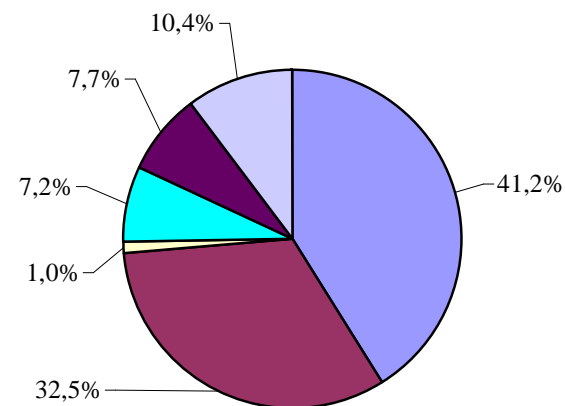
**Estonia**

- Perinatal conditions
- Congenital anomalies
- Infectious and parasitic diseases
- Injuries and poisoning
- Diseases of the respiratory system
- Other causes



**Latvia**

- Perinatal conditions
- Congenital anomalies
- Infectious and parasitic diseases
- Injuries and poisoning
- Diseases of the respiratory system
- Other causes



**Lithuania**

- Perinatal conditions
- Congenital anomalies
- Infectious and parasitic diseases
- Injuries and poisoning
- Diseases of the respiratory system
- Other causes



**Infant mortality by causes**  
per 10,000 live births in 2005

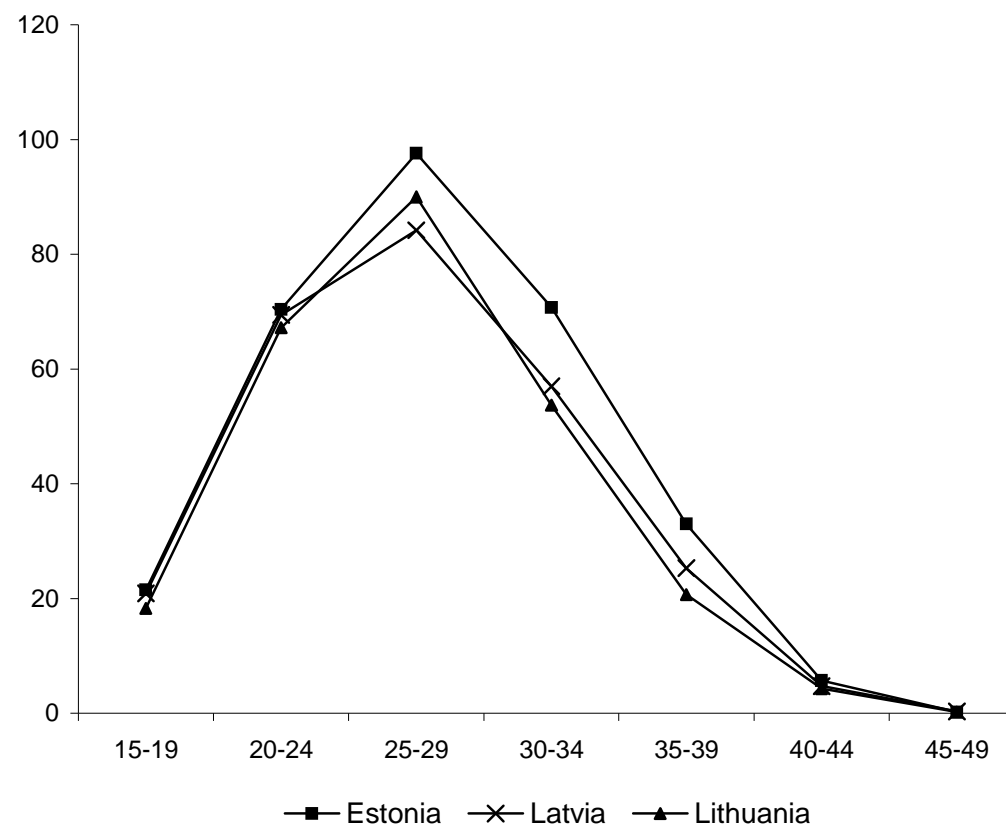
	Estonia		Latvia		Lithuania	
	Rate	%	Rate	%	Rate	%
Certain conditions originating in the perinatal period	20.2	37.2	37.6	47.6	28.2	41.2
Congenital anomalies	14.6	26.9	19.0	24.4	22.3	32.5
Diseases of the respiratory system	1.4	2.6	2.8	3.6	5.2	7.7
Infectious and parasitic diseases	0.0	0.0	2.3	3.0	0.7	1.0
Accidents, injury and poisoning	8.4	15.4	6.5	8.3	4.9	7.2
Diseases of the nervous system and sense organs	2.8	5.1	0.9	1.2	0.3	0.5
Diseases of the digestive system	0.0	0.0	0.0	0.0	0.0	0.0
Other causes	7.0	12.8	9.3	11.9	6.9	10.1
<b>TOTAL</b>	<b>54.4</b>	<b>100.0</b>	<b>78.0</b>	<b>100.0</b>	<b>68.5</b>	<b>100.0</b>

**Perinatal, neonatal and maternal mortality**  
in 2005

	Estonia	Latvia	Lithuania
Perinatal mortality per 1000 births	8.1	9.9	7.6
Foetal death rate per 1000 births	6.1	6.1	5.0
Neonatal mortality per 1000 live births	3.3	5.6	4.1
Early neonatal mortality per 1000 live births	2.0	3.8	2.6
Maternal mortality per 100,000 live births	15.4	4.6	13.1
Standard perinatal mortality	5.4	8.1	4.8
Standard foetal death rate	4.8	4.8	3.9

**Birth rates by age of mother in 2005**  
per 1000 women

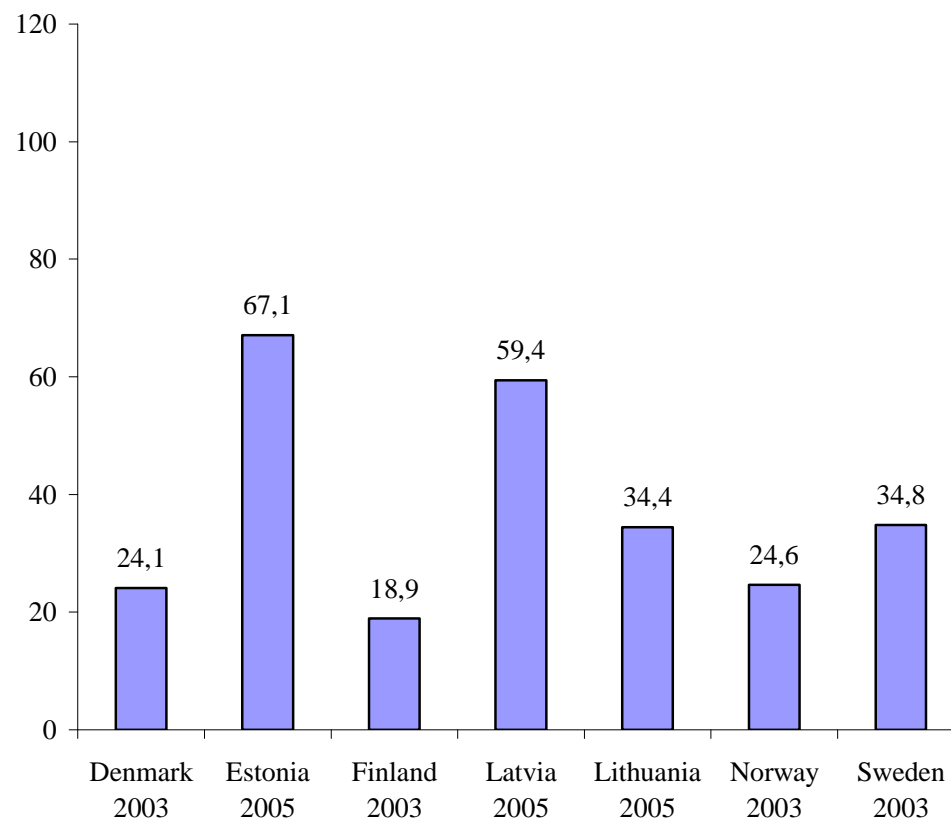
	<b>Estonia</b>	<b>Latvia</b>	<b>Lithuania</b>
Women 15-49 years of age	41.9	34.6	34.4
Of them by age:			
15-19	21.5	20.9	18.3
20-24	70.4	69.4	67.2
25-29	97.6	84.2	90.0
30-34	70.7	57.0	53.7
35-39	33.0	25.3	20.7
40-44	5.7	4.7	4.3
45-49	0.2	0.3	0.2
<b>Total fertility rate</b>	1.50	1.31	1.27



**Abortions in 2005**

	<b>Estonia</b>	<b>Latvia</b>	<b>Lithuania</b>
<b>All abortions</b>			
Total number	11849	17338	15912
Per 1000 women aged 15-49 years	34.6	29.3	17.9
Per 100 live births	82.7	80.5	54.6
<b>Induced abortions</b>			
Total number	9619	12785	9972
Per 1000 women aged 15-49 years	28.1	21.6	11.2
Per 100 live births	67.1	59.4	34.4
<b>Percentage</b>			
Spontaneous abortions	7.6	23.3	28.1
Legal abortions	79.3	71.5	62.2
Medical abortions	1.9	2.2	0.5
Other abortions	11.2	3.0	9.2

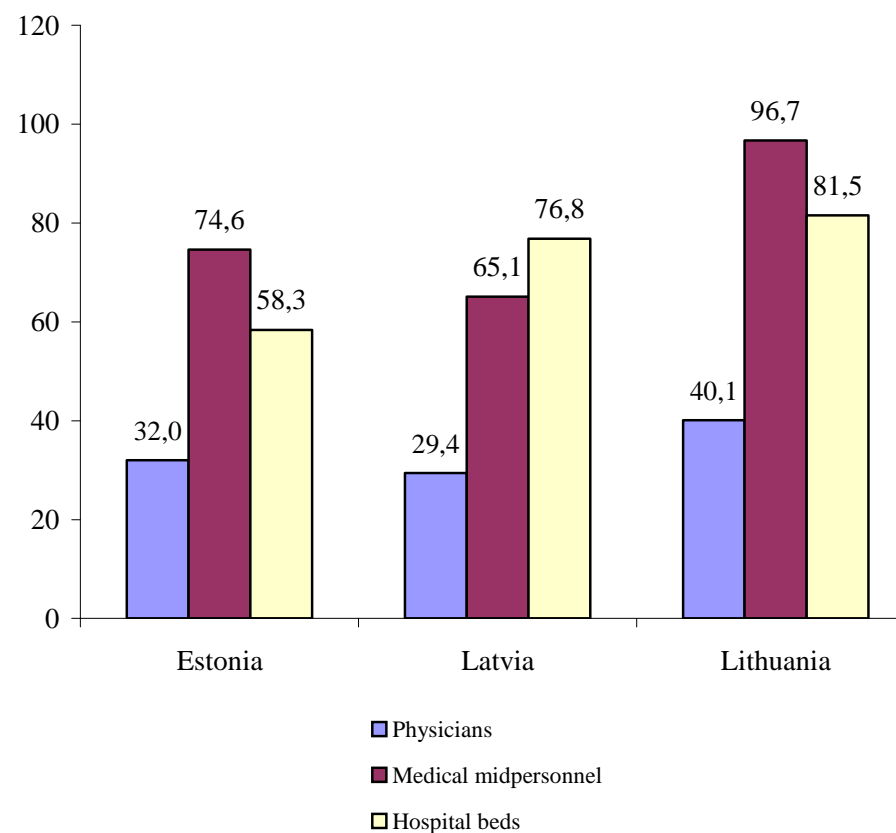
**Induced abortions per 100 live births**



Health facilities in 2005\*

	Estonia	Latvia	Lithuania
<b>Hospitals</b>	51	109	173
<b>Hospital beds:</b>			
Thousand	7.9	17.7	27.7
Per 10,000 population	58.3	76.8	81.5
<b>Physicians:</b>			
Thousand	4.3	6.8	13.7
Per 10,000 population	32.0	29.4	40.1
<b>Dentists:</b>			
Thousand	1.2	1.5	2.5
Per 10,000 population	8.7	6.3	7.2
<b>Medical midpersonnel:</b>			
Thousand	10.1	14.9	32.9
Per 10,000 population	74.6	65.1	96.7
<b>Hospital admission:</b>			
Thousand	258.8	508.5	812.7
Per 100 population	19.2	22.1	23.8
<b>Physicians visits:</b>			
Million	8.3	11.9	23.1
Per 1 inhabitant	6.2	5.2	6.8

Number of physicians, medical midpersonnel and hospital beds per 10,000 population in 2005\*



\* Data for Estonia - 2004

**Health in the Baltic countries**

**Physicians by speciality at the end of 2005\***

	Estonia		Latvia		Lithuania	
	Number	Per 10,000 population	Number	Per 10,000 population	Number	Per 10,000 population
TOTAL **	4312	32.0	6757	29.4	13650	40.1
Of them:						
Family doctors and general practitioners	818	6.1	1274	5.6	1730	5.1
Internal medicine	510	3.8	423	1.8	2327	6.8
Surgery (include orthopaedics)	400	3.0	493	2.1	1234	3.6
Paediatrics	241	1.8	243	1.1	1220	3.6
Gynaecology (include obstetrics)	284	2.1	480	2.1	777	2.3
Oncology	32	0.2	82	0.4	126	0.4
Otolaryngology	100	0.7	162	0.7	288	0.8
Ophthalmology	118	0.9	222	1.0	353	1.0
Anaesthesiology	257	1.9	371	1.6	609	1.8
Neurology	143	1.1	247	1.1	495	1.5
Psychiatry	178	1.3	243	1.1	557	1.6
Narcology	-	-	81	0.4	47	0.1
Tuberculosis	-	-	137	0.6	65	0.2
Infectology	32	0.2	55	0.2	80	0.2
Epidemiology			56	0.2	140	0.4
Dermatology & venerology	79	0.6	115	0.5	182	0.5
Radiology	184	1.4	277	1.2	464	1.4
Pathology	57	0.4	38	0.2	64	0.2
Forensic medicine	-	-	44	0.2	64	0.2
Laboratory	124	0.9	209	0.9	93	0.3
Hygiene	-	-	47	0.2	190	0.6
Others	755	5.6	1458	6.4	2545	7.5
* Data for Estonia - 2004						
** Number of dentists is not included						

**Health in the Baltic countries**

**Hospital beds by speciality at the end of 2005\***

	<b>Estonia</b>			<b>Latvia**</b>			<b>Lithuania</b>		
	Number of beds	Per 10000 population	%	Number of beds	Per 10000 population	%	Number of beds	Per 10000 population	%
<b>TOTAL</b>	7850	58.3	100	17677	76.8	100	27727	81.5	100.0
Of them:									
Internal medicine	1536	11.7	19.6	3080	13.4	17.4	5186	15.2	18.7
Rehabilitation	384	2.9	4.9	755	3.3	4.3	1338	3.9	4.8
Surgery (include orthopaedics)	1574	11.7	20.1	3506	15.2	19.8	4790	14.1	17.3
Oncology (include radiology)	108	0.8	1.4	818	3.6	4.6	987	2.9	3.6
Otolaryngology	82	0.6	1.0	187	0.8	1.1	349	1.0	1.3
Ophthalmology	34	0.3	0.4	175	0.8	1.0	315	0.9	1.1
Obstetrics	318	2.8	4.1	645	2.8	3.6	916	2.7	3.3
Gynaecology	278	2.4	3.5	586	2.5	3.3	809	2.4	2.9
Neurology	309	2.3	3.9	1041	4.5	5.9	1741	5.1	6.3
Dermatology & venerology	84	0.6	1.1	120	0.5	0.7	148	0.4	0.5
Infectious	183	1.4	2.3	614	2.7	3.5	611	1.8	2.2
Tuberculosis	302	2.2	3.8	1087	4.7	6.1	1298	3.8	4.7
Paediatrics	368	2.7	4.7	766	3.3	4.3	1503	4.4	5.4
Psychiatry	709	5.3	9.0	3152	13.7	17.8	3232	9.5	11.7
Narcology	-	-	-	415	1.8	2.3	298	0.9	1.1
General & nursing	1089	8.1	13.9	314	1.4	1.8	3527	10.4	12.7

\* Data for Estonia – 2004

\*\* Hospital beds average in 2005; excluding short-term social care beds

## Health in the Baltic countries

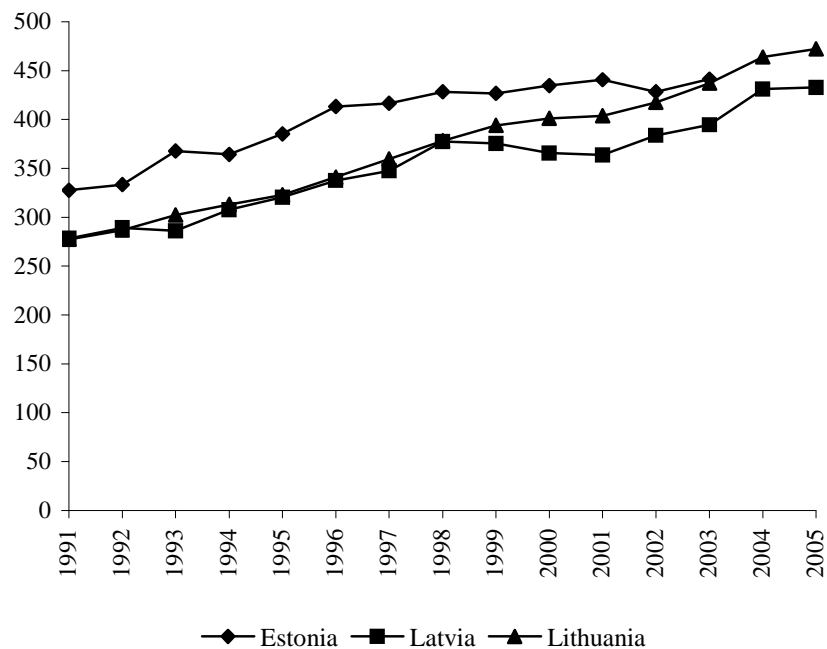
### Selected notifiable diseases per 100,000 population in 2005\*

	<b>Estonia</b>	<b>Latvia</b>	<b>Lithuania</b>
Typhoid fever and paratyphoid	0.1	0.04	0.1
Salmonella infections	23.2	26.7	69.5
Bacillary dysentery	7.3	7.9	14.0
Other intestinal infections	183.9	278.2	314.6
Diphtheria	0.0	0.9	0.0
Whooping cough	4.7	1.1	1.9
Meningococcal infection	1.0	0.8	2.4
Measles	0.1	0.09	0.03
Tick-borne viral encephalitis	12.2	6.2	7.1
Viral hepatitis	23.5	67.7	8.8
A	1.3	6.3	2.2
B	5.8	4.8	4.1
Acute upper respiratory infections	16804.4	19743.3	17342.0
Influenza	44.8	909.3	960.0
<b>Malignant neoplasms</b>			
Incidence	441.5	432.9	472.2
Prevalence	2776.6	2363.5	1998.7
<b>Tuberculosis</b>			
Incidence (excl. relapses)	31.5	53.8	61.7
Prevalence	32.6	77.3	216.2
Syphilis	8.2	19.3	8.6
Gonorrhoea	21.4	30.2	12.7
AIDS	2.2	3.1	0.3
HIV carrier	46.1	13.0	3.5

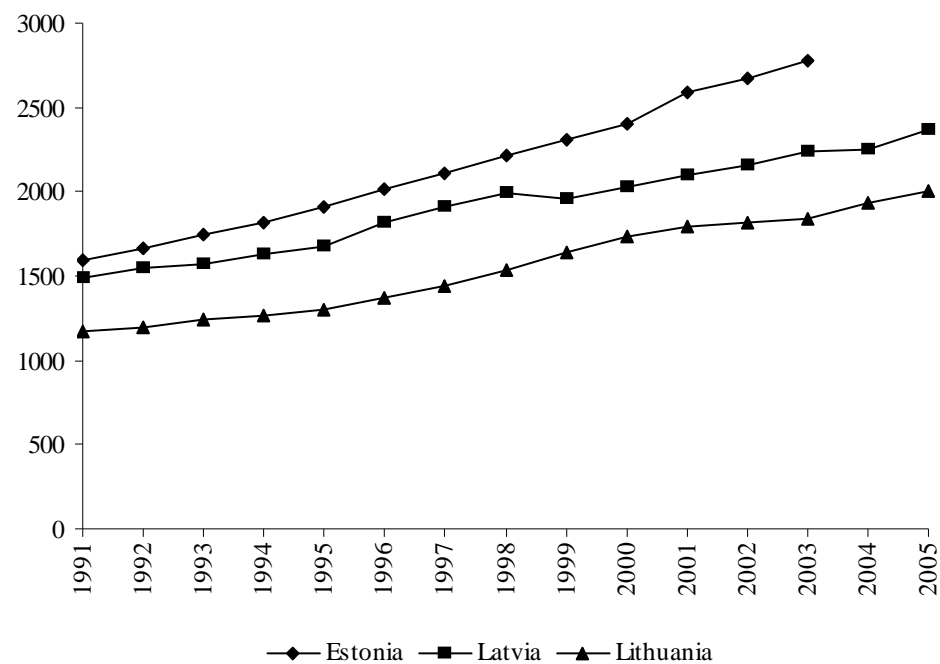
\*Data for Estonia : incidence and prevalence of neoplasms – 2003

**Malignant neoplasms**  
(per 100,000 population)

**incidence**

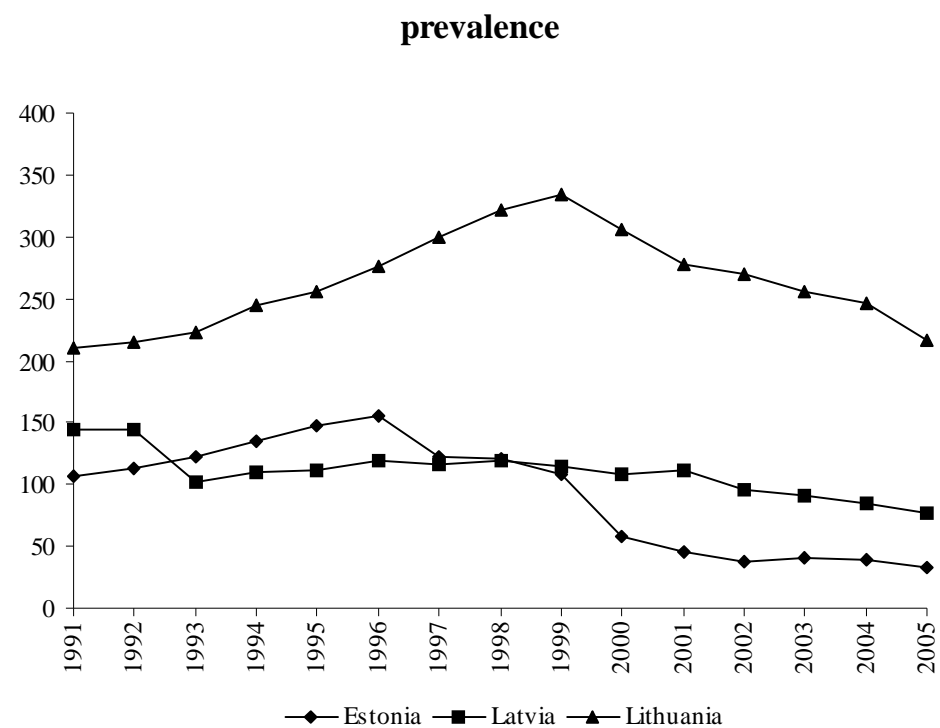
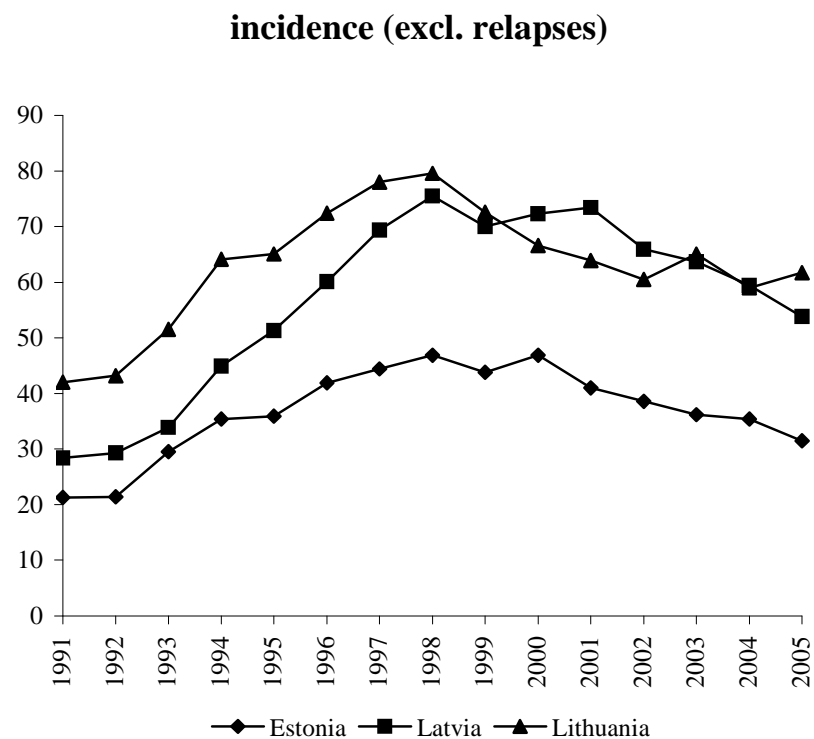


**prevalence**



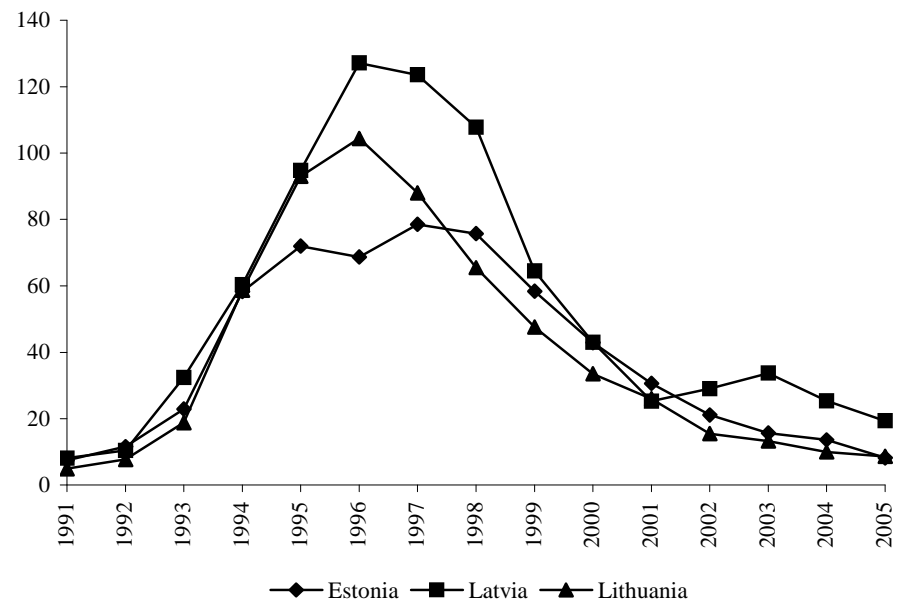


**Tuberculosis**  
(per 100,000 population)

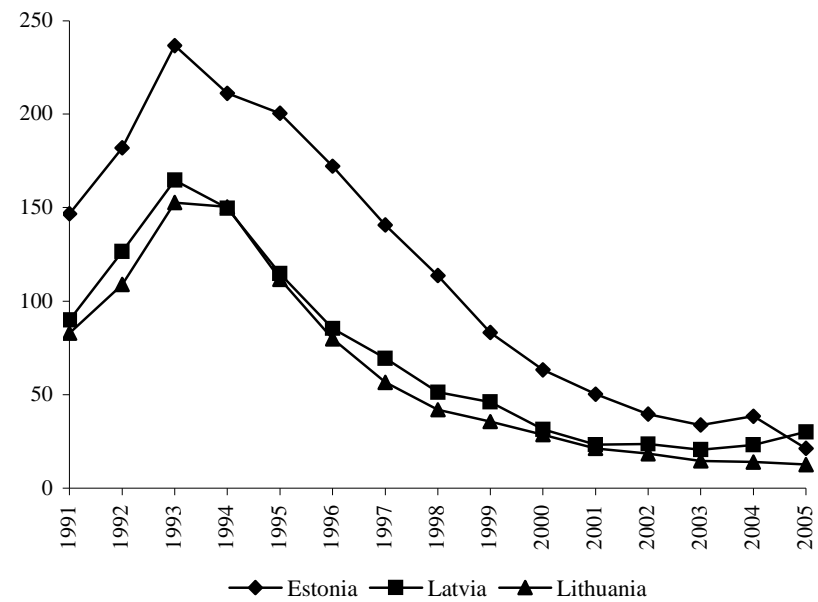


## Health in the Baltic countries

**Incidence of syphilis**  
(per 100,000 population)



**Incidence of gonorrhoea**  
(per 100,000 population)



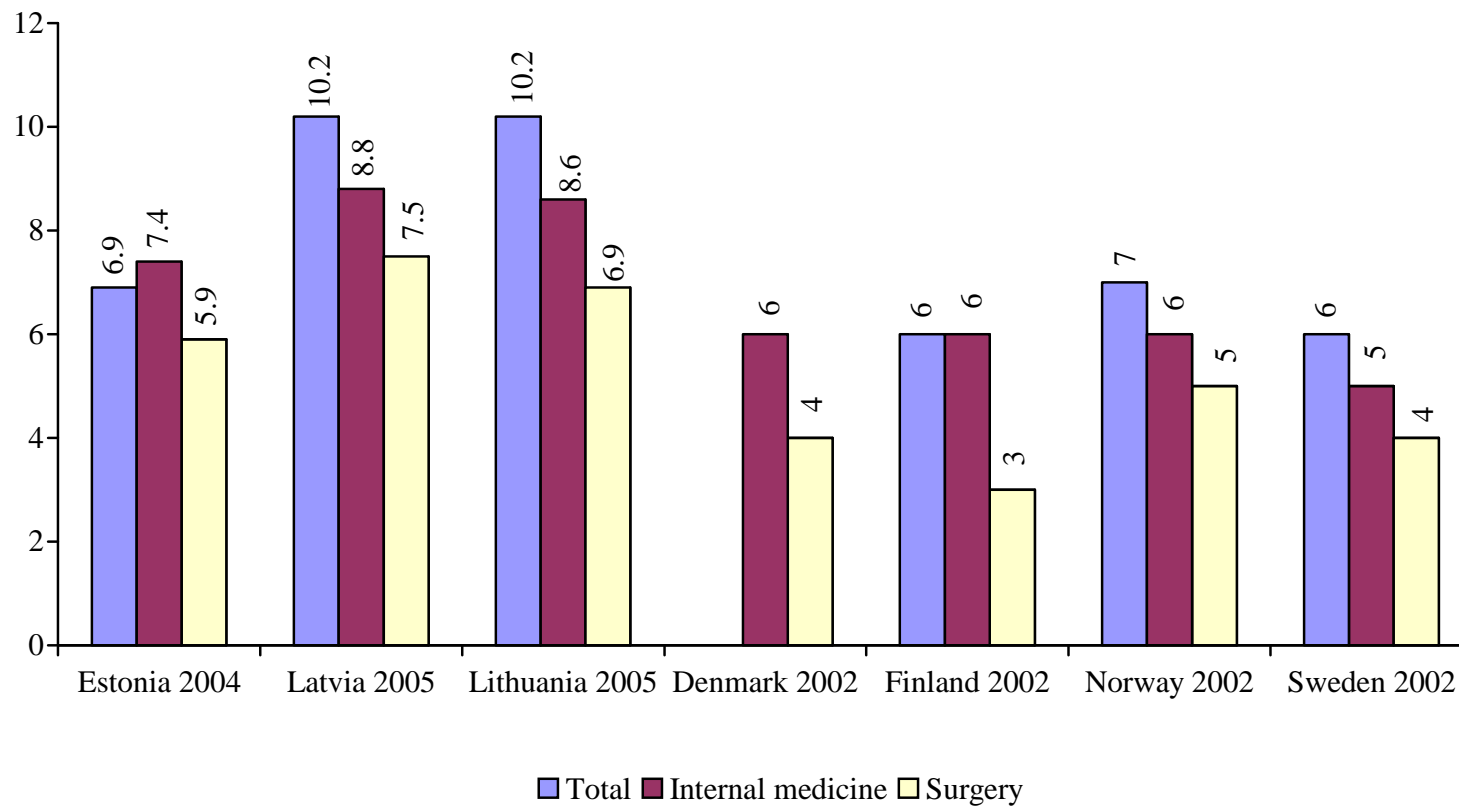
**Hospital beds utilization by speciality in 2005\***

	Estonia					Latvia**					Lithuania				
	Admission per 1000 pop.	Bed occupancy		Average length of stay	Bed turnover	Admission per 1000 pop.	Bed occupancy		Average length of stay	Bed turnover	Admission per 1000 pop.	Bed occupancy		Average length of stay	Bed turnover
		Days	%				Days	%				Days	%		
TOTAL	191.8	265.0	72.6	6.9	37.7	221.0	287.8	78.8	10.2	28.8	238.0	295.6	81.0	10.2	29.0
Internal medicine	38.6	272.2	74.6	7.4	35.6	44.8	291.3	79.8	8.8	34.4	52.2	314.3	86.1	8.6	36.5
Rehabilitation	4.5	237.9	65.2	14.4	16.4	6.1	324.1	88.8	17.5	18.5	4.5	273.8	75.0	23.7	11.5
Surgery (include orthopaedics)	49.1	265.2	72.7	5.9	44.0	55.8	273.5	74.9	7.5	37.2	56.2	277.9	76.1	6.9	40.3
Oncology (include radiology)	2.7	288.5	79.0	8.5	33.7	9.2	248.0	67.9	9.7	26.0	8.2	293.1	80.3	10.3	28.6
Otolaryngology	9.8	248.7	68.1	1.7	143.1	3.9	259.4	71.1	5.3	48.8	5.9	257.0	70.4	4.5	57.3
Ophthalmology	1.5	152.5	41.8	2.7	56.4	3.1	215.3	59.0	5.2	41.2	6.3	271.9	74.5	4.0	68.5
Obstetrics	14.7	212.5	58.2	3.5	60.8	11.7	230.1	63.0	5.5	41.9	12.8	241.5	66.2	5.1	47.0
Gynaecology	13.8	181.1	49.6	2.7	67.9	16.7	257.5	70.6	3.9	65.8	15.0	234.7	64.3	3.7	62.8
Neurology	8.5	269.9	73.9	7.2	37.0	14.7	301.2	82.5	9.7	32.7	17.7	317.3	86.9	8.9	35.8
Dermatology & venerology	1.3	220.7	60.5	9.6	23.0	1.3	324.1	88.8	13.4	24.1	1.1	276.4	75.7	10.3	26.9
Infectious	5.2	231.4	63.4	6.1	38.1	10.9	240.0	65.8	5.9	40.6	8.1	275.5	75.5	5.8	47.7
Tuberculosis	1.0	260.8	71.5	55.3	4.7	3.0	286.9	78.6	45.5	6.5	2.0	320.1	87.7	61.8	5.2
Paediatrics	11.4	216.3	59.3	5.1	41.4	12.3	271.4	74.4	7.3	37.4	18.6	278.3	76.3	6.4	43.5
Psychiatry	10.8	314.7	86.2	16.1	19.5	8.4	348.7	95.5	58.3	6.1	9.0	305.2	83.6	31.6	9.7
Narcology	-	-	-	-	-	8.4	244.4	67.0	5.3	46.5	2.0	299.6	82.1	12.3	24.3
General & nursing	8.0	314.0	86.0	27.2	11.0	3.6	186.9	51.2	7.3	26.4	7.2	330.4	90.5	48.7	6.8

\*Data for Estonia – 2004, calculations have changed compared to previous publications. See details in Estonian Health Statistics 2004.

\*\* Without short-term social care beds

Average length of stay (days)



Discharges by groups of diseases in 2005\*

	Estonia				Latvia***				Lithuania			
	children		adults		children		adults		children		adults	
	discharges per 1000 pop.	average length of stay	discharges per 1000 pop.	average length of stay	discharges per 1000 pop.	average length of stay	discharges per 1000 pop.	average length of stay	discharges per 1000 pop.	average length of stay	discharges per 1000 pop.	average length of stay
Certain infectious and parasitic diseases	16.6	4.0	4.6	20.1	18.2	7.7	5.8	28.8	24.3	5.6	5.4	26.5
Neoplasms	4.6	3.6	18.5	8.1	3.0	8.2	20.5	9.2	3.1	8.1	20.5	10.0
Diseases of the blood and blood forming organs and certain disorders involving the immune mechanisms	2.0	3.8	1.0	7.8	1.0	6.5	0.8	9.8	1.1	6.4	1.2	8.6
Endocrine, nutritional and metabolic diseases	1.8	5.0	3.7	8.8	2.0	6.4	4.4	8.1	2.0	6.4	4.6	9.8
Mental disorders and behavioural disorders	6.5	9.2	13.3	16.1	9.2	17.1	20.3	21.3	3.4	12.9	13.9	26.6
Diseases of the nervous system	7.9	7.0	4.7	10.1	9.3**	8.2**	12.1**	7.7**	5.9	7.5	12.5	10.2
Diseases of the eye and adnexa	1.1	2.3	1.6	2.9	-	-	-	-	3.1	6.7	6.4	4.0
Diseases of the ear and mastoid process	5.8	3.8	1.0	4.4	-	-	-	-	4.8	6.7	1.5	8.1
Diseases of the circulatory system	2.0	4.7	39.8	10.5	2.0	5.1	41.2	9.3	2.1	5.0	54.5	13.1
Diseases of the respiratory system	59.2	3.8	14.6	6.4	65.5	7.2	13.2	8.9	70.2	6.2	15.5	9.7
Diseases of the digestive system	12.1	3.4	18.3	5.7	19.7	4.7	18.3	6.7	21.3	4.4	19.2	7.4
Diseases of the skin and subcutaneous tissue	4.8	4.5	3.6	8.9	5.7	6.0	3.6	8.4	5.5	4.9	4.2	9.2
Diseases of the musculo-skeletal and connective tissue	3.2	4.7	14.1	7.6	5.3	12.6	16.1	10.7	3.3	8.0	14.4	10.6
Diseases of the genitourinary system	6.7	4.5	13.4	4.6	7.4	6.2	15.5	5.3	6.6	5.8	17.9	5.2
Pregnancy, childbirth and puerperium	0.1	2.9	41.1	3.1	2.8	4.6	23.5	4.9	0.1	3.8	21.8	4.5
Certain conditions originating in perinatal period	14.6	8.1	-	-	16.1	6.7	-	-	18.9	7.1	-	-
Congenital malformations, deformations and chromosomal abnormalities	7.8	5.8	0.6	5.7	5.6	7.5	0.6	6.2	7.1	6.5	0.5	7.5
Symptoms, signs and abnormal clinical and laboratory findings, not elsewhere classified	4.0	2.7	1.2	4.1	0.8	5.3	0.2	5.1	5.2	26.3	1.4	9.4
Injury, poisoning and certain other consequences of external causes	11.6	3.5	12.0	10.1	21.8	5.0	21.9	8.2	18.1	4.3	21.1	9.1
<b>TOTAL</b>	176.4	4.6	190.7	8.2	195.4	7.3	218.0	9.8	206.0	6.5	236.4	10.7

\* Data for Estonia - 2004

\*\* Diseases of the nervous system and sense organs

\*\*\* Without short term social care beds

**Surgical operations in hospitals in 2005\*\*\*\***

	Estonia			Latvia			Lithuania		
	Number	Per 100,000 population	%	Number	Per 100,000 population	%	Number	Per 100,000 population	%
TOTAL	84449	6258.8	100	159672	6940.7	100.0	275008	8054.6	100.0
On the nervous system	2397	177.6	2.8	3113	135.3	1.9	6988	204.7	2.5
On the endocrine system	540	40.0	0.6	1614	70.2	1.0	1862	54.5	0.7
On the eye	1895	140.4	2.2	6440	279.9	4.0	18913	553.9	6.9
On the ear, throat and nose	14071	1042.8	16.7	8049	349.9	5.0	22410	656.4	8.2
On the respiratory system	1585	117.5	1.9	1900	82.6	1.2	3285	96.2	1.2
On the heart	2916	216.1	3.5	7245	314.9	4.5	4715	138.1	1.7
On the vessels	3514	260.4	4.2	4299	186.9	2.7	15291	447.9	5.6
On the digestive system	12617	935.1	14.9	19572	850.8	12.3	41352	1211.1	15.0
On the kidneys and ureter	849	62.9	1.0	4797*	208.5*	3.0*	6696	196.1	2.4
On the prostate**	1113	179.1	1.3	-	-	-	7370	462.8	2.7
On the female genital organs***	12199	1676.2	14.4	24095	1942.5	15.1	38735	2126.1	14.1
Obstetrical operations***	9580	1316.4	11.3	21931	1768.0	13.7	25094	1377.4	9.1
On the musculoskeletal system	12773	946.6	15.1	25494	1108.2	16.0	43905	1285.9	16.0
On the breast	656	48.6	0.8	2110	91.7	1.3	3255	95.3	1.2
On the skin and subcutaneous tissue	4559	337.9	5.4	12776	555.4	8.0	25014	732.6	9.1
Other procedures	3185	236.1	3.8	15354	667.4	9.6	10123	296.5	3.7

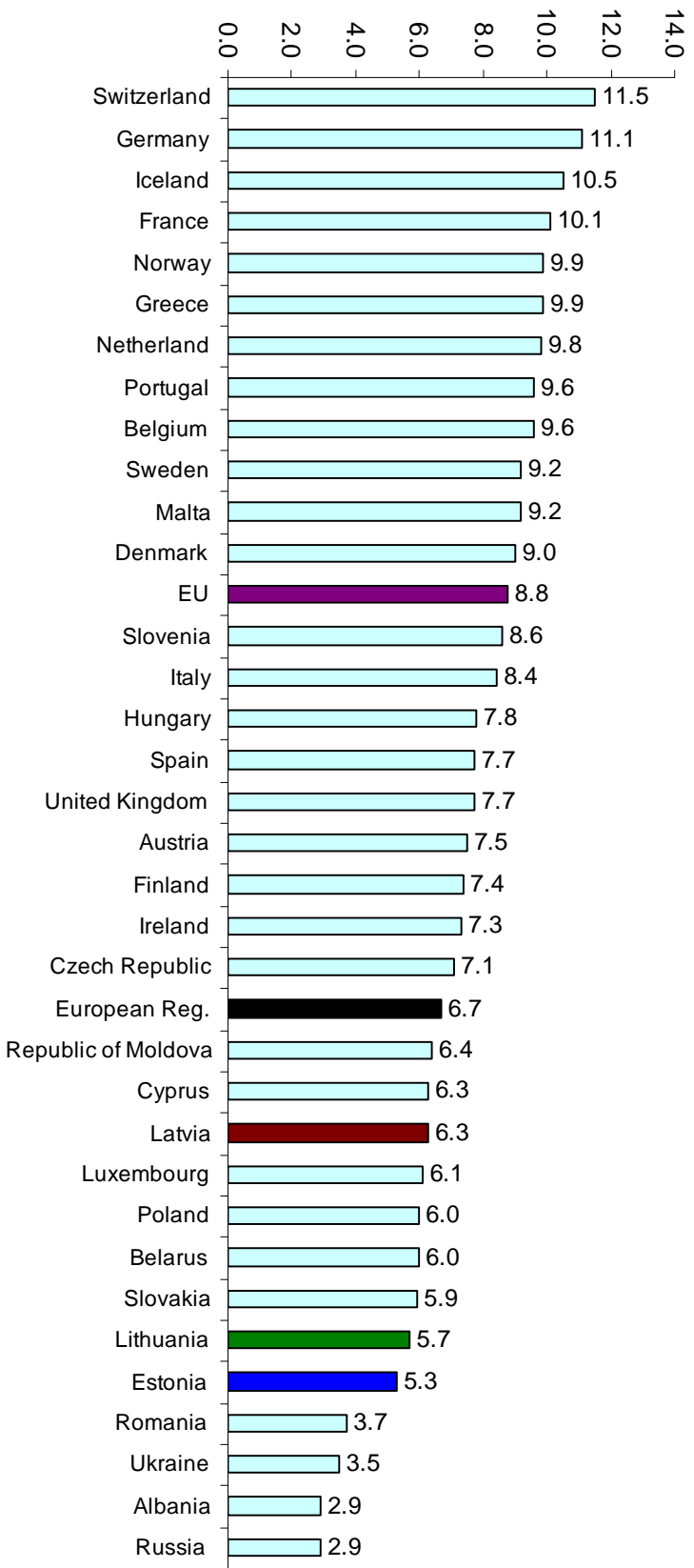
\*) Data for Latvia 2005, including operations on prostate

\*\* ) Per 100,000 male population

\*\*\* ) Per 100,000 female population

\*\*\*\*) Data for Estonia – 2004, by main surgical procedure; NCSP vs 1.6 is used since 2003

**Total health care expenditure as % of GDP**



Note: WHO data 2000-2003; data for Latvia and Estonia - 2004, Lithuania - 2005

\*Estonia – calculated using the SHA (OECD)

## Obstetric Definitions

Live birth -	Foetus that after complete expulsion or extraction from its mother breathes or shows any other evidence of life, irrespective of the duration of the pregnancy.		rate is used for international comparison including births with a weight of 1000 g or more.
Foetal death -	Death prior to the complete expulsion or extraction from its mother of a product of conception after 22 weeks of gestation. Standard rate is used for international comparison including births with a weight of 1000 g or more.	Maternal death -	The death of a woman while pregnant or within 42 days after termination of pregnancy, irrespective of the duration and the site of the pregnancy, from any cause related to or aggravated by the pregnancy or its management, but not from accidental or incidental causes.
Infant death -	Live-born infant that dies during the first year of life.	Abortion -	Spontaneous or induced (legal, therapeutic, criminal) abortion is pregnancy termination or artificial extraction of the product of the conception during the first 22 weeks of gestation.
Neonatal death -	Death occurring at the age of 0 to 27 full days of life (27 days 23 hours 59 min.). The first day of life is considered as day zero.		
Early neonatal death -	Death occurring at the age of 0 to 6 full days of life (6 days 23 hours 59 min.). The first day of life is considered as day zero.	Total fertility rate -	The average number of children that would be born per woman if all women lived to the end of their childbearing years and bore children according to a given set of age-specific fertility rates.
Perinatal death -	Foetal deaths and live-born infants that die at the age of 0 to 6 full days of life. Standard		



## Sources

1. Statistical Yearbook of Estonia 2006. Statistical Office of Estonia. Tallinn, 2006
2. Estonian Health Statistics 2004. Ministry of Social Affairs of Estonia. Tallinn, 2006
3. Statistical database on the website of Statistical Office of Estonia <http://www.stat.ee>
4. Demography 2005. Central Statistical Bureau of Latvia. Riga, 2006
5. Yearbook of Healthcare Statistics in Latvia 2005. Latvian Health Statistics and Medical Technologies State Agency, Health Statistics Department. Riga, 2006
6. Branch statistical overviews and databases of Health Statistics Department, Health Statistics and Medical Technologies State Agency of Latvia
7. Statistical Yearbook of Lithuania 2005. Department of Statistics to the Government of the Republic of Lithuania. Vilnius, 2006.
8. Demographic Yearbook 2005. Department of Statistics to the Government of the Republic of Lithuania. Vilnius, 2006.
9. Health Statistics of Lithuania 2005. Lithuanian Health Information Centre. Vilnius, 2006.
10. Health for All. Statistical Database. WHO Regional Office for Europe. Version June 2006.

Ministry of Social Affairs of Estonia,  
Gonsiori 29, 15027 Tallinn, Estonia  
Phone: 372-6269301,  
Fax: 372-6992209,  
E-mail: [info@sm.ee](mailto:info@sm.ee)  
Website: <http://www.sm.ee>

Health Statistics and Medical Technologies State Agency,  
Duntes 12/22, Riga LV 1005, Latvia  
Phone: 371-7501590  
Fax: 371-7501591  
E-mail: [medstat@vsmtva.gov.lv](mailto:medstat@vsmtva.gov.lv)  
Website: <http://www.vsmtva.gov.lv>  
E. Lavendelis, director

Lithuanian Health Information Centre,  
Kalvariju 153, LT 08221, Vilnius, Lithuania  
Phone: 370-5-2773301  
Fax: 370-5-2773302  
E-mail: [lsic@lsic.lt](mailto:lsic@lsic.lt)  
Website: <http://www.lsic.lt>  
Dr. A. Gaižauskiene, director

---

### Health in the Baltic Countries 2005

---

#### Editorial board:

Ministry of Social Affairs of Estonia:  
Dr. L. Rooväli, Dr. M. Rätsep, M. Ruuge  
Health Statistics and Medical Technologies State Agency of Latvia:  
Dr. med. J. Karashkevica, Dr. D. Mihalovska, D. Jermačāne  
Lithuanian Health Information Centre:  
Dr. A. Gaižauskiene, R. Gaidelyte

The edition was prepared by:  
Health Statistics and Medical Technologies State Agency, Latvia  
I.Karashkevics, Computer layout