



Cancer in Estonia 2017



Tervise Arengu Instituut
National Institute for Health Development

National Institute for Health Development

Cancer in Estonia 2017

Margit Mägi, Pille Härmaorg, Kaire Innos

Tallinn 2020

National Institute for Health Development's **mission** is to establish and share health related knowledge as well as to influence health behavior and determinants of health so as to increase the wellbeing of the people in Estonia and help them live longer and healthier lives.

When citing data from the report refer to source.

Recommended reference to present report: Mägi M, Härmaorg P, Innos K. Cancer in Estonia 2017. Tallinn: National Institute for Health Development; 2020.

Table of contents

- Summary 4
- Introduction..... 5
- 1 Leading cancer sites 6
- 2 Cancer incidence indicators..... 9
- 3 Cancer incidence by age 16
- 4 Cancer cases by basis of diagnosis 21
- 5 Extent of disease at diagnosis 28
- 6 Cancer incidence trends 35
- 7 Cancer prevalence..... 37
- 8 Cancer survival..... 38

Summary

In 2017, 8779 new cancer cases were registered in Estonia of which 4425 were diagnosed in men and 4358 in women. The two leading cancer sites in men were prostate (25% of all cancers in men) and lung (14%). In women, the leading sites were non-melanoma skin (19% of all cancers in women) and breast (18%).

The number of new cases and crude and age-standardized incidence rates per 100 000 in men and women for reportable tumours in Estonian Cancer Registry are presented in the Tables.

More than 60% of all malignant tumours are diagnosed in age-group of 65 and more years and the most frequent cancer sites vary across age-groups.

The proportion of microscopically verified cases in 2017 was 92%, while 1% of cases were registered on the basis of death certificates only (DCO cases). About half of the new cancer cases diagnosed in 2017 were localized at the time of diagnosis, but 18% of the patients already had distant metastasis.

Incidence data for Estonia is available since 1968. Cancer incidence has continuously increased, reaching about 8800 new cases in 2017. Incidence trends differ across cancer sites and between men and women.

On 31 December 2017, there were 62 073 persons (24 939 men and 37 134 women) in the population of Estonia with a cancer history.

Cancer survival in Estonia is continuously increasing for most sites. The one-year and five-year relative survival ratio for all cancer sites combined (2012-2016) was 77% and 63%, respectively.

Introduction

Estonian Cancer Registry (ECR) is a population-based registry that collects data on all cancer cases in Estonia. More information about the ECR is available at the webpage of National Institute for Health Development (<http://www.tai.ee/en/r-and-d/registers/estonian-cancer-registry>).

For coding topography and morphology of the tumour the ECR uses the Third Edition of International Classification of Diseases for Oncology (ICD-O-3). For this report, the Tenth Revision of the International Classification of Diseases (ICD-10) has been used by converting the ICD-O-3 codes into ICD-10 codes (Ferlay J, Burkhard C, Whelan S, Parkin D.M. Check and Conversion Programs for Cancer Registries. IARC Technical Report No. 42, Lyon 2005). The calculation of the age-standardized incidence rates is based on the World Standard Population (Waterhouse J, Muir C, Correa P, Powell J, eds. Cancer in Five Continents, Vol III. IARC Scientific Publications No. 15. Lyon, 1976, p. 456).

Incidence data was updated 11.12.2019.

Cancer survival analysis included all cases of invasive primary cancer diagnosed in adults (age ≥ 15 years) during the patients' lifetime and registered in the ECR. Cancer survival was measured as one-year and five-year relative survival ratio, calculated by dividing the observed survival of cancer patients by expected survival of the underlying general population. Expected survival was calculated according to Ederer II method, using national lifetables, stratified by gender, age and calendar year. One-year or five-year relative survival ratio can be interpreted as the proportion of patients alive (not died from cancer) one or five years after diagnosis. Period method was used for calculating survival for 2012-2016.

1 Leading cancer sites

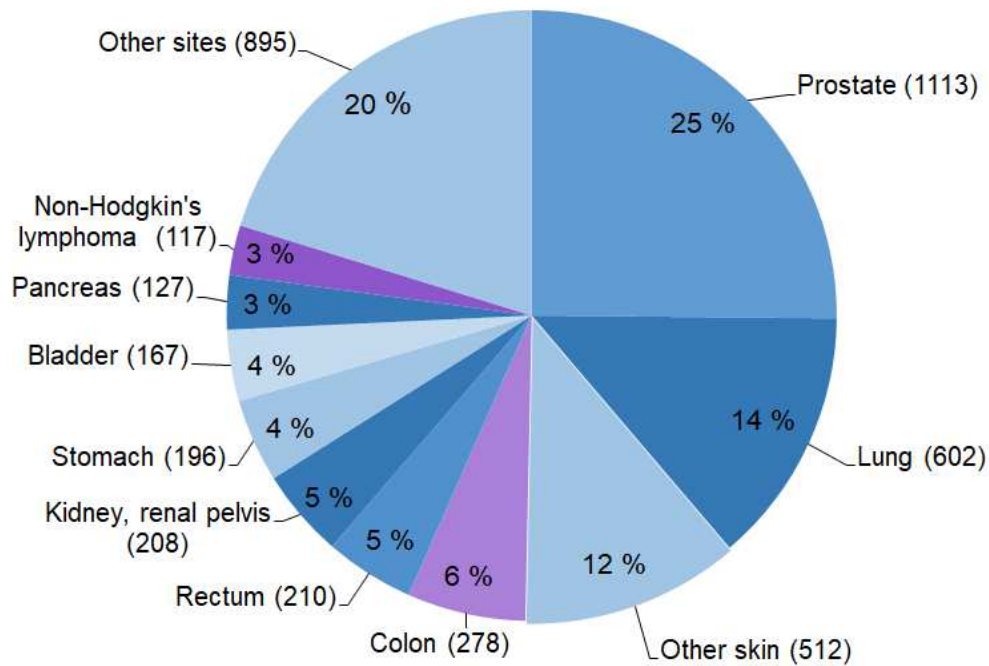
In 2017, 8779 new cancer cases were registered in Estonia of which 4425 were diagnosed in men and 4358 in women. Most common cancers are seen on Figure 1.

The leading cancer sites in men were prostate (25% of all cancers in men), lung (14%), non-melanoma skin (12%), colon (6%), rectum (5%) and kidney with renal pelvis (5%). Stomach, bladder, pancreas and non-Hodgkin's lymphoma were also among ten most common sites among men.

In women, the leading sites were non-melanoma skin (19% of all cancers in women) and breast (18%), followed by colon (8%) and corpus uteri (6%). Lung, rectum, stomach, kidney with renal pelvis, cervix and skin melanoma were also among ten most common sites among women.

Table 1a and 1b show the number of new cancer cases, as well as crude and age-standardized incidence rates per 100 000 in men and women for ten most frequent cancer sites.

Men



Women

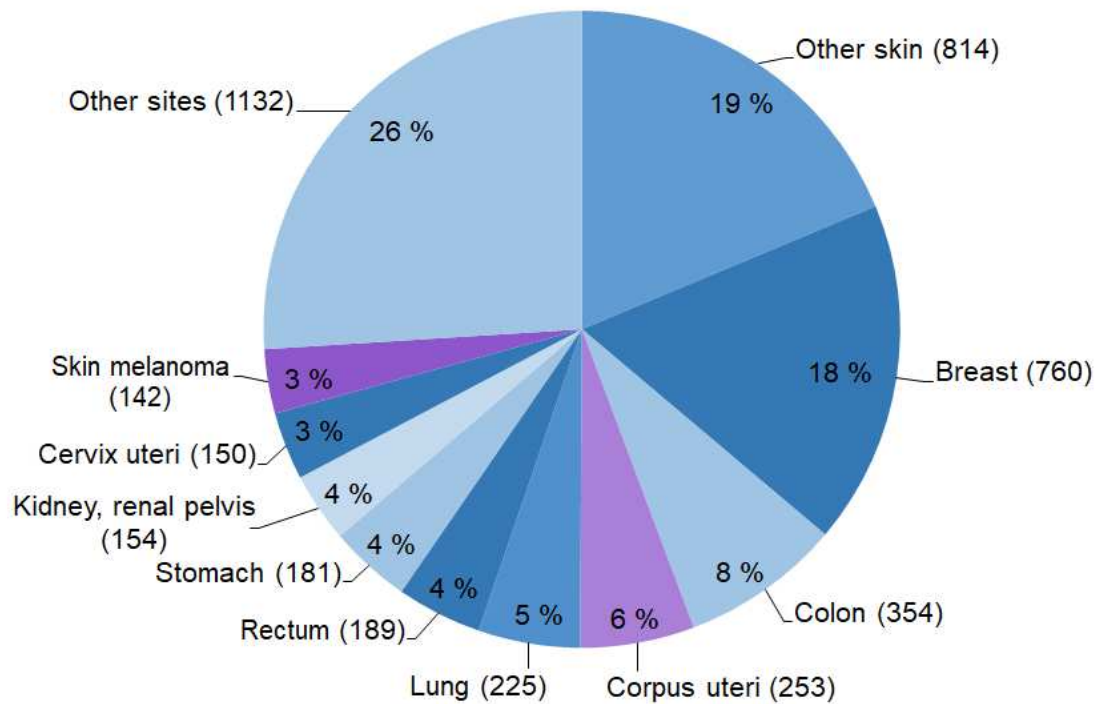


Figure 1. Leading cancer sites in Estonia, 2017 (n, %)

Table 1a. Leading cancer sites in Estonia in men, 2017

Cancer site	ICD-10	New cases		Incidence rate per 100 000	
		Number	%	Crude	Standardized*
Prostate	C61	1 113	25.2	179.7	98.9
Trachea, bronchus, lung	C33-C34	602	13.6	97.2	53.0
Other skin	C44	512	11.6	82.7	43.8
Colon	C18	278	6.3	44.9	23.5
Rectum	C19-C21	210	4.7	33.9	18.4
Kidney, renal pelvis	C64-C65	208	4.7	33.6	18.8
Stomach	C16	196	4.4	31.6	17.3
Bladder	C67	167	3.8	27.0	14.2
Pancreas	C25	127	2.9	20.5	11.1
Non-Hodgkin's lymphoma	C82-C86/C96	117	2.6	18.9	11.9
All sites	C00-C97	4 425	100	714.5	400.4

* Standardized by age (to the world standard population).

Table 1b. Leading cancer sites in Estonia in women, 2017

Cancer site	ICD-10	New cases		Incidence rate per 100 000	
		Number	%	Crude	Standardized*
Other skin	C44	814	18.7	116.6	45.9
Breast	C50	760	17.5	108.9	56.2
Colon	C18	354	8.1	50.7	17.6
Corpus uteri	C54	253	5.8	36.2	18.1
Trachea, bronchus, lung	C33-C34	225	5.2	32.2	12.2
Rectum	C19-C21	189	4.3	27.1	10.2
Stomach	C16	181	4.2	25.9	10.2
Kidney, renal pelvis	C64-C65	154	3.5	22.1	8.5
Cervix uteri	C53	150	3.4	21.5	13.7
Melanoma of skin	C43	142	3.3	20.3	12.2
All sites	C00-C97	4 354	100	623.7	279.2

* Standardized by age (to the world standard population).

2 Cancer incidence indicators

Table 2a and 2b show the number of new cancer cases and crude and age-standardized incidence rates per 100 000 by cancer site in men and women. In Tables 3a and 3b, the corresponding data are presented for malignant neoplasms of lymphoid, haematopoietic and related tissues, which also include polycythemia vera, myelodysplastic syndromes and other neoplasms of uncertain behaviour of lymphoid, hematopoietic and related tissue coded as D45-D47 in ICD-10.

The number of new cancer cases by age groups and age-specific incidence rates by cancer site are available in the Health Statistics and Health Research Database (http://pxweb.tai.ee/PXWeb2015/pxweb/en/02Haigestumus/02Haigestumus_04PahaloomulisedKasvajad/?tablelist=true&rxid=6bc0ac48-c378-45c7-a8d6-a60878ebb666).

In addition to all malignant neoplasms, in situ neoplasms and benign neoplasms and neoplasms of uncertain or unknown behaviour of brain and central nervous system as well as of the endocrine organs that are located in the area of the brain, are also reported to the registry. The number of new cases of these neoplasms as well as crude and age-standardized incidence rates in 2017 in men and women are presented in tables 4a and 4b.

Table 2a. The number of new cases, crude and age-standardized incidence rates (ASIR) of cancer per 100 000 by cancer site in Estonia in men, 2017

Cancer site	ICD-10	Number of new cases	Crude	ASIR*
All sites	C00-C97	4 425	714.5	400.4
All sites but other skin	C00-C97 but C44	3 913	631.8	356.6
Lip, oral cavity, pharynx	C00-C14	131	21.2	13.0
Lip	C00	8	1.3	0.6
Tongue	C01-C02	24	3.9	2.4
Gum. floor of mouth etc.	C03-C06	35	5.7	3.4
Major salivary glands	C07-C08	4	0.6	0.4
Tonsil, oropharynx	C09-C10	39	6.3	4.1
Nasopharynx	C11	1	0.2	0.1
Pyriform sinus, hypopharynx	C12-C13	19	3.1	1.8
Other lip, oral cavity, pharynx	C14	1	0.2	0.1
Digestive organs	C15-C26	1 001	161.6	87.4
Oesophagus	C15	73	11.8	6.8
Stomach	C16	196	31.6	17.3
Small intestine	C17	9	1.5	0.8
Colon	C18	278	44.9	23.5
Rectum etc.	C19-C21	210	33.9	18.4
Liver etc.	C22	75	12.1	6.7
Gallbladder etc.	C23-C24	25	4.0	2.1
Pancreas	C25	127	20.5	11.1
Other digestive organs	C26	8	1.3	0.7

* Standardized to the world standard population.

Table 2a. (cont.)

Cancer site	ICD-10	Number of new cases	Crude	ASIR*
Respiratory, intrathoracic organs	C30-C39	670	108.2	59.8
Nasal cavities, ear, sinuses	C30-C31	9	1.5	0.9
Larynx	C32	54	8.7	5.5
Trachea, bronchus, lung	C33-C34	602	97.2	53.0
Thymus, heart, mediastinum, pleura	C37-C38	5	0.8	0.5
Respiratory organs etc.	C39	-	-	-
Bone, articular cartilage	C40-C41	6	1.0	0.8
Melanoma of skin	C43	83	13.4	8.4
Other skin	C44	512	82.7	43.8
Mesothelial and soft tissues	C45-C49	28	4.5	3.0
Breast	C50	8	1.3	0.7
Male genital organs	C60-C63	1 159	187.1	104.4
Penis	C60	14	2.3	1.1
Prostate	C61	1 113	179.7	98.9
Testis	C62	32	5.2	4.3
Other male genital organs	C63	-	-	-
Urinary organs	C64-C68	381	61.5	33.5
Kidney, renal pelvis	C64-C65	208	33.6	18.8
Ureter	C66	4	0.6	0.3
Bladder	C67	167	27.0	14.2
Other urinary organs	C68	2	0.3	0.2
Eye	C69	7	1.1	0.6
Brain, central nervous system	C70-C72	64	10.3	7.9
Meninges	C70	-	-	-
Brain	C71	64	10.3	7.9
Other central nervous system	C72	-	-	-
Thyroid gland	C73	10	1.6	1.0
Other endocrine	C74-C75	3	0.5	0.3
Site unknown or uncertain	C76-C80	72	11.6	6.2
Hodgkin's disease	C81	16	2.6	2.2
Non-Hodgkin's lymphoma	C82-C85/96	117	18.9	11.9
Immunoproliferative diseases	C88	2	0.3	0.2
Multiple myeloma	C90	50	8.1	4.3
Leukaemia	C91-C95	105	17.0	11.0
Independent multiple sites	C97	-	-	-

* Standardized to the world standard population.

Table 2b. The number of new cases, crude and age-standardized incidence rates (ASIR) of cancer per 100 000 by cancer site in Estonia in women, 2017

Cancer site	ICD-10	Number of new cases	Crude	ASIR*
All sites	C00-C97	4 354	623.7	279.2
All sites but other skin	C00-C97 but C44	3 540	507.1	233.3
Lip, oral cavity, pharynx	C00-C14	49	7.0	3.7
Lip	C00	4	0.6	0.2
Tongue	C01-C02	14	2.0	1.1
Gum, floor of mouth etc.	C03-C06	12	1.7	0.8
Major salivary glands	C07-C08	7	1.0	0.5
Tonsil, oropharynx	C09-C10	7	1.0	0.7
Nasopharynx	C11	2	0.3	0.2
Pyriform sinus, hypopharynx	C12-C13	2	0.3	0.2
Other lip, oral cavity, pharynx	C14	1	0.1	0.0
Digestive organs	C15-C26	973	139.4	50.2
Oesophagus	C15	12	1.7	0.9
Stomach	C16	181	25.9	10.2
Small intestine	C17	11	1.6	0.8
Colon	C18	354	50.7	17.6
Rectum etc.	C19-C21	189	27.1	10.2
Liver etc.	C22	53	7.6	2.5
Gallbladder etc.	C23-C24	35	5.0	1.5
Pancreas	C25	135	19.3	6.5
Other digestive organs	C26	3	0.4	0.1
Respiratory, intrathoracic organs	C30-C39	238	34.1	13.0
Nasal cavities, ear, sinuses	C30-C31	4	0.6	0.3
Larynx	C32	7	1.0	0.4
Trachea, bronchus, lung	C33-C34	225	32.2	12.2
Thymus, heart, mediastinum, pleura	C37-C38	2	0.3	0.2
Respiratory organs etc.	C39	-	-	-
Bone, articular cartilage	C40-C41	3	0.4	0.2
Melanoma of skin	C43	142	20.3	12.2
Other skin	C44	814	116.6	45.9
Mesothelial and soft tissues	C45-C49	37	5.3	4.1

* Standardized to the world standard population.

Table 2b. (cont.)

Cancer site	ICD-10	Number of new cases	Crude	ASIR*
Breast	C50	760	108.9	56.2
Female genital organs	C51-C58	598	85.7	45.6
Vulva, vagina	C51-C52	41	5.9	2.3
Cervix uteri	C53	150	21.5	13.7
Corpus uteri	C54	253	36.2	18.1
Uterus unspecified	C55	3	0.4	0.1
Ovary	C56	136	19.5	10.5
Other female genital organs	C57	15	2.1	0.8
Placenta	C58	-	-	-
Urinary organs	C64-C68	220	31.5	11.8
Kidney, renal pelvis	C64-C65	154	22.1	8.5
Ureter	C66	8	1.1	0.4
Bladder	C67	57	8.2	2.7
Other urinary organs	C68	1	0.1	0.1
Eye	C69	8	1.1	0.5
Brain, central nervous system	C70-C72	42	6.0	4.0
Meninges	C70	-	-	-
Brain	C71	42	6.0	4.0
Other central nervous system	C72	-	-	-
Thyroid gland	C73	73	10.5	5.5
Other endocrine	C74-C75	1	0.1	0.1
Site unknown or uncertain	C76-C80	69	9.9	2.4
Hodgkin's disease	C81	24	3.4	3.6
Non-Hodgkin's lymphoma	C82-C85/96	123	17.6	8.8
Immunoproliferative diseases	C88	-	-	-
Multiple myeloma	C90	68	9.7	3.2
Leukaemia	C91-C95	112	16.0	8.1
Independent multiple sites	C97	-	-	-

* Standardized to the world standard population.

Table 3a. The number of new cases of malignant neoplasms of lymphoid, haematopoietic and related tissues, crude and age-standardized incidence rates (ASIR) per 100 000 in Estonia in men, 2017

Cancer site	ICD-10	Number of new cases	Crude	ASIR*
Hodgkin's disease	C81	16	2.6	2.2
Non-Hodgkin's lymphoma	C82-C85/96	117	18.9	11.9
Immunoproliferative diseases	C88	2	0.3	0.2
Multiple myeloma	C90	50	8.1	4.3
Leukaemia	C91-C95	105	17.0	11.0
Lymphoid leukaemia	C91	68	11.0	7.5
Acute lymphoid leukaemia	C91.0	9	1.5	1.9
Chronic lymphoid leukaemia	C91.1	55	8.9	5.2
Other lymphoid leukaemia	C91.2-C91.9	4	0.6	0.4
Myeloid leukaemia	C92	31	5.0	2.8
Acute myeloid leukaemia	C92.0	16	2.6	1.3
Chronic myeloid leukaemia	C92.1	13	2.1	1.3
Other myeloid leukaemia	C92.2-C92.9	2	0.3	0.2
Other leukaemia	C93-C95	6	1.0	0.7
Polycythaemia vera	D45	21	3.4	1.9
Myelodysplastic syndromes	D46	16	2.6	1.2
Other neoplasms of lymphoid, haematopoietic and related tissue	D47	40	6.5	3.7

* Standardized to the world standard population.

Table 3b. The number of new cases of malignant neoplasms of lymphoid, haematopoietic and related tissues, crude and age-standardized incidence rates (ASIR) per 100 000 in Estonia in women, 2017

Cancer site	ICD-10	Number of new cases	Crude	ASIR*
Hodgkin's disease	C81	24	3.4	3.6
Non-Hodgkin's lymphoma	C82-C85/96	123	17.6	8.8
Immunoproliferative diseases	C88	-	-	-
Multiple myeloma	C90	68	9.7	3.2
Leukaemia	C91-C95	112	16.0	8.1
Lymphoid leukaemia	C91	63	9.0	4.4
Acute lymphoid leukaemia	C91.0	5	0.7	1.4
Chronic lymphoid leukaemia	C91.1	53	7.6	2.6
Other lymphoid leukaemia	C91.2-C91.9	5	0.7	0.4
Myeloid leukaemia	C92	43	6.2	3.0
Acute myeloid leukaemia	C92.0	19	2.7	1.2
Chronic myeloid leukaemia	C92.1	21	3.0	1.6
Other myeloid leukaemia	C92.2-C92.9	3	0.4	0.2
Other leukaemia	C93-C95	6	0.9	0.6
Polycythaemia vera	D45	37	5.3	1.9
Myelodysplastic syndromes	D46	24	3.4	0.9
Other neoplasms of lymphoid, haematopoietic and related tissue	D47	61	8.7	4.3

*Standardized to the world standard population.

Table 4a. The number of new cases of neoplasms *in situ*, benign and uncertain or unknown behaviour* and crude and age-standardized incidence rates (ASIR) per 100 000 by cancer site in Estonia in men, 2017

Cancer site	ICD-10	Number of new cases	Crude	ASIR**
<i>In situ</i> neoplasms	D00-D09	124	20.0	10.6
Neoplasms of benign and uncertain or unknown behaviour of brain and central nervous system	D32, D33, D42, D43	46	7.4	5.2
Meninges	D32, D42	28	4.5	2.6
Brain, central nervous system	D33, D43	18	2.9	2.6
Neoplasms of benign and uncertain or unknown behaviour of intracranial endocrine glands	D35.2-D35.4, D44.3-D44.5	9	1.5	0.9

* Neoplasms reportable to the Estonian Cancer Registry. ** Standardized to the world standard population.

Table 4b. The number of new cases of neoplasms *in situ*, benign and uncertain or unknown behaviour* and crude and age-standardized incidence rates (ASIR) per 100 000 by cancer site in Estonia in women, 2017

Cancer site	ICD-10	Number of new cases	Crude	ASIR**
<i>In situ</i> neoplasms	D00-D09	193	27.6	13.9
Cervix uteri	D06	24	3.4	3.2
Neoplasms of benign and uncertain or unknown behaviour of brain and central nervous system	D32, D33, D42, D43	98	14.0	7.9
Meninges	D32, D42	75	10.7	5.8
Brain, central nervous system	D33, D43	23	3.3	2.2
Neoplasms of benign and uncertain or unknown behaviour of intracranial endocrine glands	D35.2-D35.4, D44.3-D44.5	18	2.6	1.9

* Neoplasms reportable to the Estonian Cancer Registry. ** Standardized to the world standard population.

3 Cancer incidence by age

More than 60% of all malignant tumours are diagnosed in age-group of 65 and more years, which is one of the main reasons for increased cancer incidence (see more in chapter 6). The age-specific cancer incidence curve is presented in Figure 2.

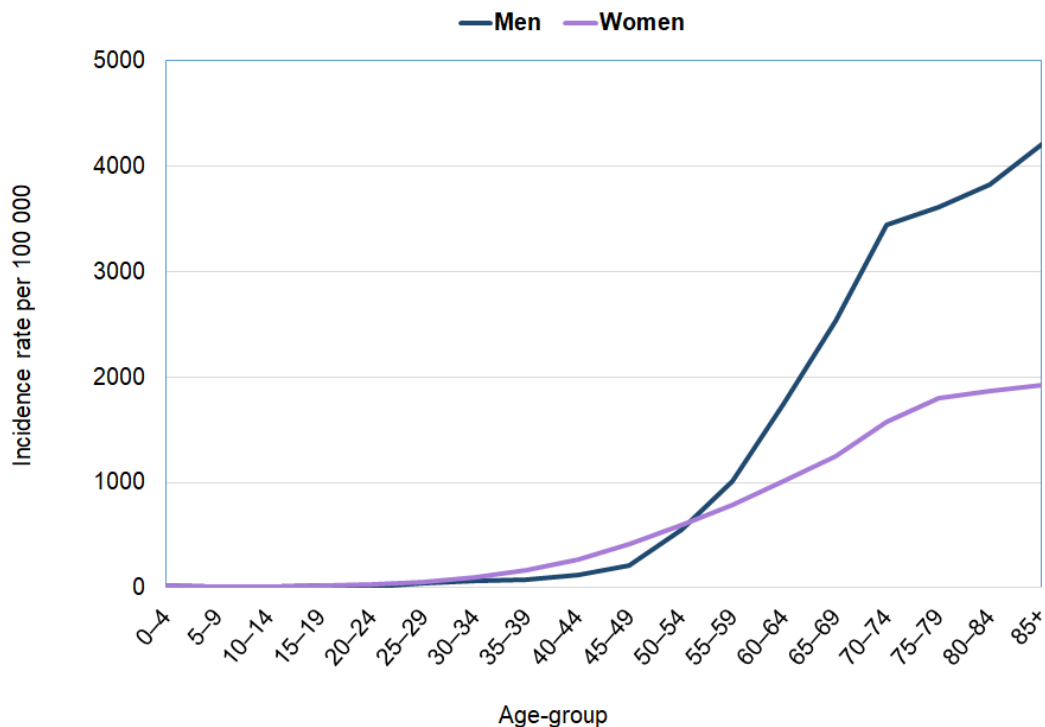


Figure 2. Age-specific cancer incidence curve in Estonia, 2017

The number of new cancer cases by age groups and age-specific incidence rates by cancer site are available in the Health Statistics and Health Research Database (http://pxweb.tai.ee/PXWeb2015/pxweb/en/02Haigestumus/02Haigestumus_04PahaloomulisedKasvajad/?tablelist=true&rxid=3e91aeb1-f6ea-4271-9c4d-0085cd22f0e4).

The most frequent cancer sites vary across age-groups (Tables 5a and 5b). Among children aged 0-14 years, the malignant neoplasms of lymphoid and haematopoietic tissues, central nervous system as well as bones and soft tissues were most frequent.

In age-group 15-34 years, the most frequently diagnosed cancers were testicular cancer and non-Hodgkin's lymphoma in men, and skin melanoma, cancers of cervix and breast and also Hodgkin's lymphoma in women.

In age-group 35-54 years, the leading cancers were non-melanoma skin cancer and prostate cancer in men, and breast cancer in women, followed by non-melanoma skin cancer.

In age-group 55-74 years, the most frequent cancers were the same as in general population, i.e. prostate, lung and non-melanoma skin cancer in men, and breast and non-melanoma skin cancer in women.

Also among men aged 75 and more years, the most frequently diagnosed cancer was prostate cancer, but non-melanoma skin cancer and lung cancer were diagnosed slightly less frequently. Among women in the same age-group, the most frequent cancer was non-melanoma skin cancer, breast and colon cancer were diagnosed less frequently.

Table 5a. Leading cancer sites by age-groups in Estonia in men*, 2017

Age-group / Cancer site	ICD-10	New cases	
		Number	%
Age-group 0-14			
Leukaemia	C91-C95	6	31.6
Brain	C71	5	26.3
Colon	C18	2	10.5
Mesothelial and soft tissues	C45-C49	2	10.5
Lip, oral cavity, pharynx	C00-C14	1	5.3
Larynx	C32	1	5.3
Bone, articular cartilage	C40-C41	1	5.3
Non-Hodgkin's lymphoma	C82-C85, C96	1	5.3
All sites	C00-C97	19	100
Age-group 15-34			
Testis	C62	17	25.4
Non-Hodgkin's lymphoma	C82-C85, C96	14	20.9
Brain	C71	6	9
Melanoma of skin	C43	5	7.5
Other skin	C44	5	7.5
Hodgkin's disease	C81	5	7.5
Colon	C18	3	4.5
Leukaemia	C91-C95	3	4.5
Lip, oral cavity, pharynx	C00-C14	2	3
Oesophagus	C15	1	1.5
All sites	C00-C97	67	100
Age-group 35-54			
Other skin	C44	65	15.6
Prostate	C61	64	15.3
Trachea, bronchus, lung	C33-C34	30	7.2
Lip, oral cavity, pharynx	C00-C14	26	6.2
Melanoma of skin	C43	24	5.8
Stomach	C16	23	5.5
Rectum etc.	C19-C21	22	5.3
Leukaemia	C91-C95	20	4.8
Non-Hodgkin's lymphoma	C82-C85, C96	18	4.3
Colon	C18	17	4.1
All sites	C00-C97	417	100

* All cases are shown for age-group of 0-14 years, ten leading sites for other age-groups.

Table 5a. (cont.)

Age-group / Cancer site	ICD-10	New cases	
		Number	%
Age-group 55-74			
Prostate	C61	733	28.8
Trachea, bronchus, lung	C33-C34	395	15.5
Other skin	C44	228	8.9
Colon	C18	136	5.3
Rectum etc.	C19-C21	119	4.7
Stomach	C16	106	4.2
Bladder	C67	94	3.7
Lip, oral cavity, pharynx	C00-C14	79	3.1
Pancreas	C25	71	2.8
Non-Hodgkin's lymphoma	C82-C85, C96	55	2.2
All sites	C00-C97	2 549	100
Age-group 75+			
Prostate	C61	316	23
Other skin	C44	214	15.6
Trachea, bronchus, lung	C33-C34	177	12.9
Colon	C18	120	8.7
Rectum etc.	C19-C21	69	5
Stomach	C16	66	4.8
Bladder	C67	64	4.7
Pancreas	C25	45	3.3
Leukaemia	C91-C95	33	2.4
Non-Hodgkin's lymphoma	C82-C85, C96	29	2.1
All sites	C00-C97	1 373	100

* All cases are shown for age-group of 0-14 years, ten leading sites for other age-groups.

Table 5b. Leading cancer sites by age-groups in Estonia in women*, 2017

Age-group / Cancer site	ICD-10	New cases	
		Number	%
Age-group 0-14			
Leukaemia	C91-C95	7	41.2
Mesothelial and soft tissues	C45-C49	5	29.4
Brain	C71	4	23.5
Non-Hodgkin's lymphoma	C82-C85, C96	1	5.9
All sites	C00-C97	17	100
Age-group 15-34			
Melanoma of skin	C43	18	19.1
Cervix uteri	C53	11	11.7
Breast	C50	10	10.6
Hodgkin's disease	C81	10	10.6
Other skin	C44	9	9.6
Colon	C18	6	6.4
Non-Hodgkin's lymphoma	C82-C85, C96	5	5.3
Stomach	C16	3	3.2
Mesothelial and soft tissues	C45-C49	3	3.2
Ovary	C56	3	3.2
All sites	C00-C97	94	100
Age-group 35-54			
Breast	C50	180	28.5
Other skin	C44	94	14.9
Cervix uteri	C53	56	8.9
Corpus uteri	C54	52	8.2
Melanoma of skin	C43	41	6.5
Ovary	C56	32	5.1
Colon	C18	20	3.2
Stomach	C16	17	2.7
Trachea, bronchus, lung	C33-C34	17	2.7
Non-Hodgkin's lymphoma	C82-C85, C96	16	2.5
All sites	C00-C97	632	100

* All cases are shown for age-group of 0-14 years, ten leading sites for other age-groups.

Table 5b. (cont.)

Age-group / Cancer site	ICD-10	New cases	
		Number	%
Age-group 55-74			
Breast	C50	361	18.6
Other skin	C44	341	17.6
Colon	C18	144	7.4
Corpus uteri	C54	136	7
Trachea, bronchus, lung	C33-C34	109	5.6
Rectum etc.	C19-C21	95	4.9
Stomach	C16	80	4.1
Kidney, renal pelvis	C64-C65	79	4.1
Ovary	C56	69	3.6
Non-Hodgkin's lymphoma	C82-C85, C96	60	3.1
All sites	C00-C97	1 938	100
Age-group 75+			
Other skin	C44	370	22.1
Breast	C50	209	12.5
Colon	C18	184	11
Trachea, bronchus, lung	C33-C34	98	5.9
Rectum etc.	C19-C21	83	5
Stomach	C16	81	4.8
Pancreas	C25	72	4.3
Corpus uteri	C54	64	3.8
Kidney, renal pelvis	C64-C65	63	3.8
Site unknown or uncertain	C76-C80	51	3
All sites	C00-C97	1 673	100

* All cases are shown for age-group of 0-14 years, ten leading sites for other age-groups.

4 Cancer cases by basis of diagnosis

The proportion of microscopically verified cases (cases with histological, cytological or haematological confirmation) was 92% in 2017.

This percentage as one of the main quality indicators of cancer registry data quality, shows the accuracy of cancer diagnosis, but also depends on diagnostic possibilities and varies by cancer site.

The percentage of death certificates only (DCO) cases, i.e. cases registered solely based on death certificates after conducting the trace-back to hospitals, was 1%.

The distribution of new cancer cases by cancer site and the most valid basis of diagnosis are presented in Tables 6a and 6b.

Table 6a. The distribution of new cancer cases by cancer site and the most valid basis of diagnosis in Estonia in men, 2017

Cancer site	ICD-10	Number of new cases	Microscopic**	Non-microscopic **	Death certificate only ***
All sites	C00-C97	4 425	91.5	7.3	1.2
All sites but other skin	C00-C97 but C44	3 913	90.5	8.2	1.3
Lip, oral cavity, pharynx	C00-C14	131	95.4	3.8	0.8
Lip	C00	8	100	-	-
Tongue	C01-C02	24	91.7	4.2	4.2
Gum, floor of mouth etc.	C03-C06	35	94.3	5.7	-
Major salivary glands	C07-C08	4	100	-	-
Tonsil, oropharynx	C09-C10	39	100	-	-
Nasopharynx	C11	1	100	-	-
Pyriiform sinus, hypopharynx	C12-C13	19	89.5	10.5	-
Other lip, oral cavity, pharynx	C14	1	100	-	-
Digestive organs	C15-C26	1 001	88	10.8	1.2
Oesophagus	C15	73	95.9	2.7	1.4
Stomach	C16	196	90.8	8.2	1
Small intestine	C17	9	88.9	11.1	-
Colon	C18	278	91	9	-
Rectum etc.	C19-C21	210	96.2	2.9	1
Liver etc.	C22	75	80	16	4
Gallbladder etc.	C23-C24	25	60	40	-
Pancreas	C25	127	70.9	26	3.1
Other digestive organs	C26	8	62.5	37.5	-

* Histology, autopsy with histology, cytology, haematology.

** Clinical only, instrumental clinical, biochemical/immunological, surgery/autopsy without histology.

*** Only information about the cancer case in the Cancer Registry comes from the Causes of Death Registry.

Table 6a. (cont.)

Cancer site	ICD-10	Number of new cases	Microscopic**	Non-microscopic **	Death certificate only ***
Respiratory, intrathoracic organs	C30-C39	670	82.2	15.8	1.9
Nasal cavities, ear, sinuses	C30-C31	9	66.7	22.2	11.1
Larynx	C32	54	98.1	1.9	-
Trachea, bronchus, lung	C33-C34	602	80.9	17.1	2
Thymus, heart, mediastinum, pleura	C37-C38	5	100	-	-
Respiratory organs etc.	C39	-	-	-	-
Bone, articular cartilage	C40-C41	6	100	-	-
Melanoma of skin	C43	83	96.4	3.6	-
Other skin	C44	512	99	0.8	0.2
Mesothelial and soft tissues	C45-C49	28	96.4	3.6	-
Breast	C50	8	100	-	-
Male genital organs	C60-C63	1 159	97.6	1.5	0.9
Penis	C60	14	100	-	-
Prostate	C61	1 113	97.6	1.4	1
Testis	C62	32	96.9	3.1	-
Other male genital organs	C63	-	-	-	-
Urinary organs	C64-C68	381	90	9.4	0.5
Kidney, renal pelvis	C64-C65	208	86.1	13.5	0.5
Ureter	C66	4	100	-	-
Bladder	C67	167	95.2	4.2	0.6
Other urinary organs	C68	2	50	50	-

* Histology, autopsy with histology, cytology, haematology.

** Clinical only, instrumental clinical, biochemical/immunological, surgery/autopsy without histology.

*** Only information about the cancer case in the Cancer Registry comes from the Causes of Death Registry.

Table 6a. (cont.)

Cancer site	ICD-10	Number of new cases	Microscopic**	Non-microscopic **	Death certificate only ***
Eye	C69	7	71.4	28.6	-
Brain, central nervous system	C70-C72	64	81.3	15.6	3.1
Meninges	C70	-	-	-	-
Brain	C71	64	81.3	15.6	3.1
Other central nervous system	C72	-	-	-	-
Thyroid gland	C73	10	100	-	-
Other endocrine	C74-C75	3	66.7	33.3	-
Site unknown or uncertain	C76-C80	72	50	44.4	5.6
Hodgkin's disease	C81	16	100	-	-
Non-Hodgkin's lymphoma	C82-C85/96	117	98.3	-	1.7
Immunoproliferative diseases	C88	2	100	-	-
Multiple myeloma	C90	50	98	-	2
Leukaemia	C91-C95	105	98.1	-	1.9
Independent multiple sites	C97	-	-	-	-

* Histology, autopsy with histology, cytology, haematology.

** Clinical only, instrumental clinical, biochemical/immunological, surgery/autopsy without histology.

*** Only information about the cancer case in the Cancer Registry comes from the Causes of Death Registry.

Table 6b. The distribution of new cancer cases by cancer site and the most valid basis of diagnosis in Estonia in women, 2017

Cancer site	ICD-10	Number of new cases	Microscopic**	Non-microscopic **	Death certificate only ***
All sites	C00-C97	4 354	92.7	6.2	1.1
All sites but other skin	C00-C97 but C44	3 540	91.3	7.4	1.3
Lip, oral cavity, pharynx	C00-C14	49	98	2	-
Lip	C00	4	100	-	-
Tongue	C01-C02	14	100	-	-
Gum, floor of mouth etc.	C03-C06	12	100	-	-
Major salivary glands	C07-C08	7	100	-	-
Tonsil, oropharynx	C09-C10	7	100	-	-
Nasopharynx	C11	2	100	-	-
Pyriform sinus, hypopharynx	C12-C13	2	100	-	-
Other lip, oral cavity, pharynx	C14	1	-	100	-
Digestive organs	C15-C26	973	89.1	10	0.9
Oesophagus	C15	12	75	8.3	16.7
Stomach	C16	181	96.1	3.3	0.6
Small intestine	C17	11	90.9	9.1	-
Colon	C18	354	93.5	6.2	0.3
Rectum etc.	C19-C21	189	96.8	2.6	0.5
Liver etc.	C22	53	79.2	17	3.8
Gallbladder etc.	C23-C24	35	68.6	31.4	-
Pancreas	C25	135	68.1	30.4	1.5
Other digestive organs	C26	3	66.7	33.3	-

* Histology, autopsy with histology, cytology, haematology.

** Clinical only, instrumental clinical, biochemical/immunological, surgery/autopsy without histology.

*** Only information about the cancer case in the Cancer Registry comes from the Causes of Death Registry.

Table 6b. (cont.)

Cancer site	ICD-10	Number of new cases	Microscopic**	Non-microscopic **	Death certificate only ***
Respiratory, intrathoracic organs	C30-C39	238	80.3	18.1	1.7
Nasal cavities, ear, sinuses	C30-C31	4	100	-	-
Larynx	C32	7	100	-	-
Trachea, bronchus, lung	C33-C34	225	79.1	19.1	1.8
Thymus, heart, mediastinum, pleura	C37-C38	2	100	-	-
Respiratory organs etc.	C39	-	-	-	-
Bone, articular cartilage	C40-C41	3	100	-	-
Melanoma of skin	C43	142	99.3	-	0.7
Other skin	C44	814	98.5	1.4	0.1
Mesothelial and soft tissues	C45-C49	37	100	-	-
Breast	C50	760	96.8	2.2	0.9
Female genital organs	C51-C58	598	94.8	4.7	0.5
Vulva, vagina	C51-C52	41	100	-	-
Cervix uteri	C53	150	93.3	6.7	-
Corpus uteri	C54	253	98.8	1.2	-
Uterus unspecified	C55	3	33.3	33.3	33.3
Ovary	C56	136	91.2	8.1	0.7
Other female genital organs	C57	15	73.3	20	6.7
Placenta	C58	-	-	-	-

* Histology, autopsy with histology, cytology, haematology.

** Clinical only, instrumental clinical, biochemical/immunological, surgery/autopsy without histology.

*** Only information about the cancer case in the Cancer Registry comes from the Causes of Death Registry.

Table 6b. (cont.)

Cancer site	ICD-10	Number of new cases	Microscopic**	Non-microscopic **	Death certificate only ***
Urinary organs	C64-C68	220	87.7	9.1	3.2
Kidney, renal pelvis	C64-C65	154	85.1	11	3.9
Ureter	C66	8	100	-	-
Bladder	C67	57	93.0	5.3	1.8
Other urinary organs	C68	1	100	-	-
Eye	C69	8	37.5	62.5	-
Brain, central nervous system	C70-C72	42	71.4	23.8	4.8
Meninges	C70	-	-	-	-
Brain	C71	42	71.4	23.8	4.8
Other central nervous system	C72	-	-	-	-
Thyroid gland	C73	73	97.3	2.7	-
Other endocrine	C74-C75	1	100	-	-
Site unknown or uncertain	C76-C80	69	34.8	53.6	11.6
Hodgkin's disease	C81	24	100	-	-
Non-Hodgkin's lymphoma	C82-C85/96	123	98.4	0.8	0.8
Immunoproliferative diseases	C88	-	-	-	-
Multiple myeloma	C90	68	97.1	-	2.9
Leukaemia	C91-C95	112	97.3	-	2.7
Independent multiple sites	C97	-	-	-	-

* Histology, autopsy with histology, cytology, haematology.

** Clinical only, instrumental clinical, biochemical/immunological, surgery/autopsy without histology.

*** Only information about the cancer case in the Cancer Registry comes from the Causes of Death Registry.

5 Extent of disease at diagnosis

The extent of disease at the time of diagnosis is one of the most important factors for the patient's prognosis, as well as for planning necessary treatment.

About half of the new cancer cases diagnosed in 2017 were localized at the time of diagnosis, but 18% had already developed distant metastasis.

In Tables 7a and 7b, the number of new cancer cases by the extent of disease at the time of diagnosis for different solid cancers can be found.

Table 7a. The distribution of new cancer cases by site and extent of disease in Estonia in men, 2017

Cancer site	ICD-10	Number of new cases	Localized	Regional, lymph nodes only	Regional, adjacent tissues	Distant metastasis	Unknown
All sites	C00-C80	4 135	48.9	8.5	13.9	20.2	8.5
All sites but other skin	C00-C80 but C44	3 623	42.2	9.6	15.8	23.1	9.3
Lip, oral cavity, pharynx	C00-C14	131	24.4	30.5	32.8	6.1	6.1
Lip	C00	8	87.5	12.5	-	-	-
Tongue	C01-C02	24	12.5	33.3	33.3	8.3	12.5
Gum, floor of mouth etc.	C03-C06	35	34.3	14.3	40	5.7	5.7
Major salivary glands	C07-C08	4	25	50	-	-	25
Tonsil, oropharynx	C09-C10	39	20.5	48.7	28.2	2.6	-
Nasopharynx	C11	1	-	-	-	100	-
Pyriform sinus, hypopharynx	C12-C13	19	5.3	26.3	47.4	10.5	10.5
Other lip, oral cavity, pharynx	C14	1	-	-	100	-	-
Digestive organs	C15-C26	1 001	27.6	16	12.4	33.8	10.3
Oesophagus	C15	73	28.8	21.9	12.3	30.1	6.8
Stomach	C16	196	22.4	15.8	10.2	37.8	13.8
Small intestine	C17	9	33.3	-	22.2	44.4	-
Colon	C18	278	40.6	15.5	8.6	29.1	6.1
Rectum etc.	C19-C21	210	26.7	27.1	12.9	23.3	10
Liver etc.	C22	75	28	4	13.3	33.3	21.3
Gallbladder etc.	C23-C24	25	20	8	48	12	12
Pancreas	C25	127	10.2	6.3	15.7	59.1	8.7
Other digestive organs	C26	8	-	-	-	62.5	37.5

Table 7a. (cont.)

Cancer site	ICD-10	Number of new cases	Localized	Regional, lymph nodes only	Regional, adjacent tissues	Distant metastasis	Unknown
Respiratory, intrathoracic organs	C30-C39	670	24.2	17.8	12.2	38.5	7.3
Nasal cavities, ear, sinuses	C30-C31	9	-	-	55.6	11.1	33.3
Larynx	C32	54	46.3	14.8	25.9	3.7	9.3
Trachea, bronchus, lung	C33-C34	602	22.8	18.4	10.1	41.9	6.8
Thymus, heart, mediastinum, pleura	C37-C38	5	-	-	40	60	-
Respiratory organs etc.	C39	-	-	-	-	-	-
Bone, articular cartilage	C40-C41	6	66.7	-	-	33.3	-
Melanoma of skin	C43	83	61.4	4.8	10.8	14.5	8.4
Other skin	C44	512	96.5	0.2	0.4	0.2	2.7
Mesothelial and soft tissues	C45-C49	28	32.1	3.6	28.6	17.9	17.9
Breast	C50	8	37.5	25	25	-	12.5
Male genital organs	C60-C63	1 159	59.4	1.4	21.7	9.8	7.6
Penis	C60	14	50	28.6	14.3	7.1	-
Prostate	C61	1 113	59.5	0.6	22.3	9.7	7.9
Testis	C62	32	62.5	15.6	6.3	15.6	-
Other male genital organs	C63	-	-	-	-	-	-
Urinary organs	C64-C68	381	61.2	1.3	13.4	16.5	7.6
Kidney, renal pelvis	C64-C65	208	55.3	0.5	14.9	24	5.3
Ureter	C66	4	25	-	25	25	25
Bladder	C67	167	70.1	2.4	10.8	7.2	9.6
Other urinary organs	C68	2	-	-	50	-	50
Eye	C69	7	71.4	14.3	-	-	14.3

Table 7a. (cont.)

Cancer site	ICD-10	Number of new cases	Localized	Regional, lymph nodes only	Regional, adjacent tissues	Distant metastasis	Unknown
Brain, central nervous system	C70-C72	64	92.2	-	-	-	7.8
Meninges	C70	-	-	-	-	-	-
Brain	C71	64	92.2	-	-	-	7.8
Other central nervous system	C72	-	-	-	-	-	-
Thyroid gland	C73	10	70	-	10	10	10
Other endocrine	C74-C75	3	-	-	-	100	-
Site unknown or uncertain	C76-C80	72	-	1.4	-	44.4	54.2

Table 7b. The distribution of new cancer cases by site and extent of disease in Estonia in women, 2017

Cancer site	ICD-10	Number of new cases	Localized	Regional, lymph nodes only	Regional, adjacent tissues	Distant metastasis	Unknown
All sites	C00–C80	4 027	52.4	13	9.5	17.2	7.7
All sites but other skin	C00–C80 but C44	3 213	41.7	16.3	11.7	21.5	8.8
Lip, oral cavity, pharynx	C00–C14	49	46.9	24.5	22.4	4.1	2
Lip	C00	4	75	-	-	-	25
Tongue	C01–C02	14	50	35.7	14.3	-	-
Gum, floor of mouth etc.	C03–C06	12	50	8.3	41.7	-	-
Major salivary glands	C07–C08	7	57.1	14.3	14.3	14.3	-
Tonsil, oropharynx	C09–C10	7	14.3	57.1	28.6	-	-
Nasopharynx	C11	2	50	50	-	-	-
Pyriiform sinus, hypopharynx	C12–C13	2	50	-	50	-	-
Other lip, oral cavity, pharynx	C14	1	-	-	-	100	-
Digestive organs	C15–C26	973	28.3	17	12.1	33.4	9.2
Oesophagus	C15	12	8.3	16.7	16.7	33.3	25
Stomach	C16	181	24.3	15.5	9.9	42	8.3
Small intestine	C17	11	27.3	18.2	9.1	36.4	9.1
Colon	C18	354	38.4	17.5	13	25.7	5.4
Rectum etc.	C19–C21	189	31.7	28.6	11.6	20.1	7.9
Liver etc.	C22	53	20.8	5.7	9.4	39.6	24.5
Gallbladder etc.	C23–C24	35	17.1	5.7	22.9	42.9	11.4
Pancreas	C25	135	10.4	8.9	11.1	55.6	14.1
Other digestive organs	C26	3	-	-	33.3	33.3	33.3

Table 7b. (cont.)

Cancer site	ICD-10	Number of new cases	Localized	Regional, lymph nodes only	Regional, adjacent tissues	Distant metastasis	Unknown
Respiratory, intrathoracic organs	C30-C39	238	26.1	16.8	6.7	38.2	12.2
Nasal cavities, ear, sinuses	C30-C31	4	-	-	50	-	50
Larynx	C32	7	71.4	14.3	14.3	-	-
Trachea, bronchus, lung	C33-C34	225	24.9	17.3	5.8	40	12
Thymus, heart, mediastinum, pleura	C37-C38	2	50	-	-	50	-
Respiratory organs etc.	C39	-	-	-	-	-	-
Bone, articular cartilage	C40-C41	3	33.3	-	-	33.3	33.3
Melanoma of skin	C43	142	66.2	8.5	9.9	7	8.5
Other skin	C44	814	95	0.1	1	0.2	3.7
Mesothelial and soft tissues	C45-C49	37	24.3	-	40.5	29.7	5.4
Breast	C50	760	47	34.5	3.2	9.3	6.1
Female genital organs	C51-C58	598	49	3.7	23.4	17.6	6.4
Vulva, vagina	C51-C52	41	58.5	12.2	14.6	7.3	7.3
Cervix uteri	C53	150	36	4	32.7	20.7	6.7
Corpus uteri	C54	253	72.7	3.6	7.9	11.5	4.3
Uterus unspecified	C55	3	-	-	33.3	-	66.7
Ovary	C56	136	21.3	1.5	41.9	30.1	5.1
Other female genital organs	C57	15	13.3	-	46.7	6.7	33.3
Placenta	C58	-	-	-	-	-	-

Table 7b. (cont.)

Cancer site	ICD-10	Number of new cases	Localized	Regional, lymph nodes only	Regional, adjacent tissues	Distant metastasis	Unknown
Urinary organs	C64-C68	220	59.5	0.9	15.5	15.5	8.6
Kidney, renal pelvis	C64-C65	154	57.8	0.6	14.3	17.5	9.7
Ureter	C66	8	62.5	12.5	25	-	-
Bladder	C67	57	64.9	-	17.5	10.5	7
Other urinary organs	C68	1	-	-	-	100	-
Eye	C69	8	87.5	-	-	-	12.5
Brain, central nervous system	C70-C72	42	90.5	-	-	-	9.5
Meninges	C70	-	-	-	-	-	-
Brain	C71	42	90.5	-	-	-	9.5
Other central nervous system	C72	-	-	-	-	-	-
Thyroid gland	C73	73	65.8	12.3	5.5	9.6	6.8
Other endocrine	C74-C75	1	100	-	-	-	-
Site unknown or uncertain	C76-C80	69	-	-	-	50.7	49.3

6 Cancer incidence trends

Cancer incidence data for Estonia are available since 1968, i.e. for a period of 50-years. The number of new incident cancer cases has continuously increased, reaching about 8800 in 2017 (Figure 3).

Time trends of cancer incidence for selected sites in 1968-2017 are presented in Figure 4.

During that period, total cancer incidence has doubled both in men and women. Incidence trends differ among cancer sites. The incidence of prostate and breast cancer is increasing although there has been a slight stabilization in recent years. The rates of colon, rectum and kidney cancers as well as skin melanoma and non-Hodgkin’s lymphoma are also increasing whereas the incidence of stomach cancer is decreasing.

Lung cancer incidence in men has continuously declined since the second half of 1990s, but it is still increasing in women.

Cervical cancer that especially affects younger women and is largely preventable with population-based screening, is an important public health issue in Estonia. Decreasing trend of cervical cancer incidence stopped in 1980s and incidence gradually started to increase again. A definitive turn to decline expected as a result of screening has not been apparent.

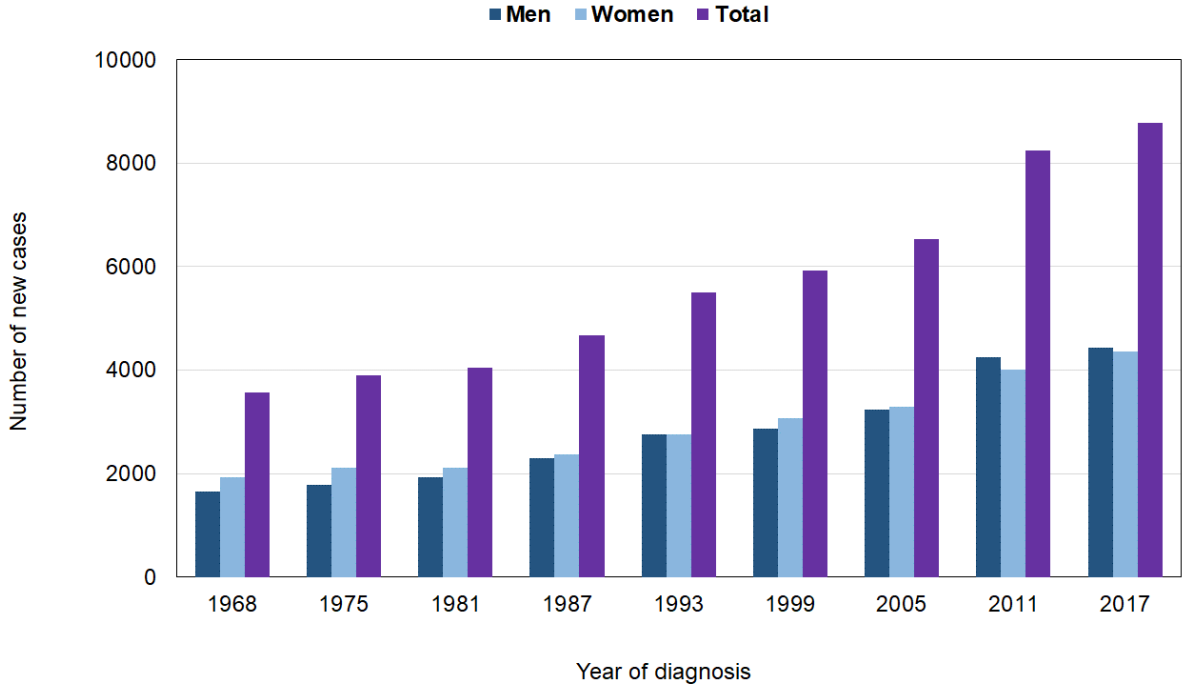
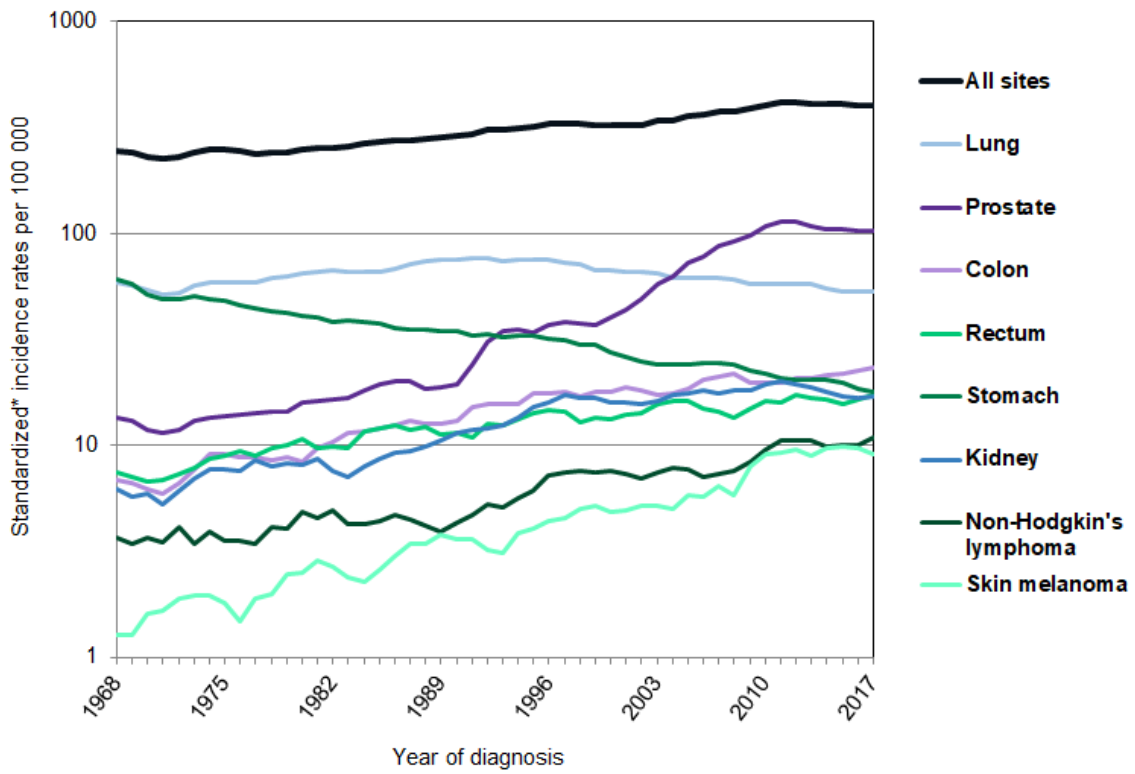


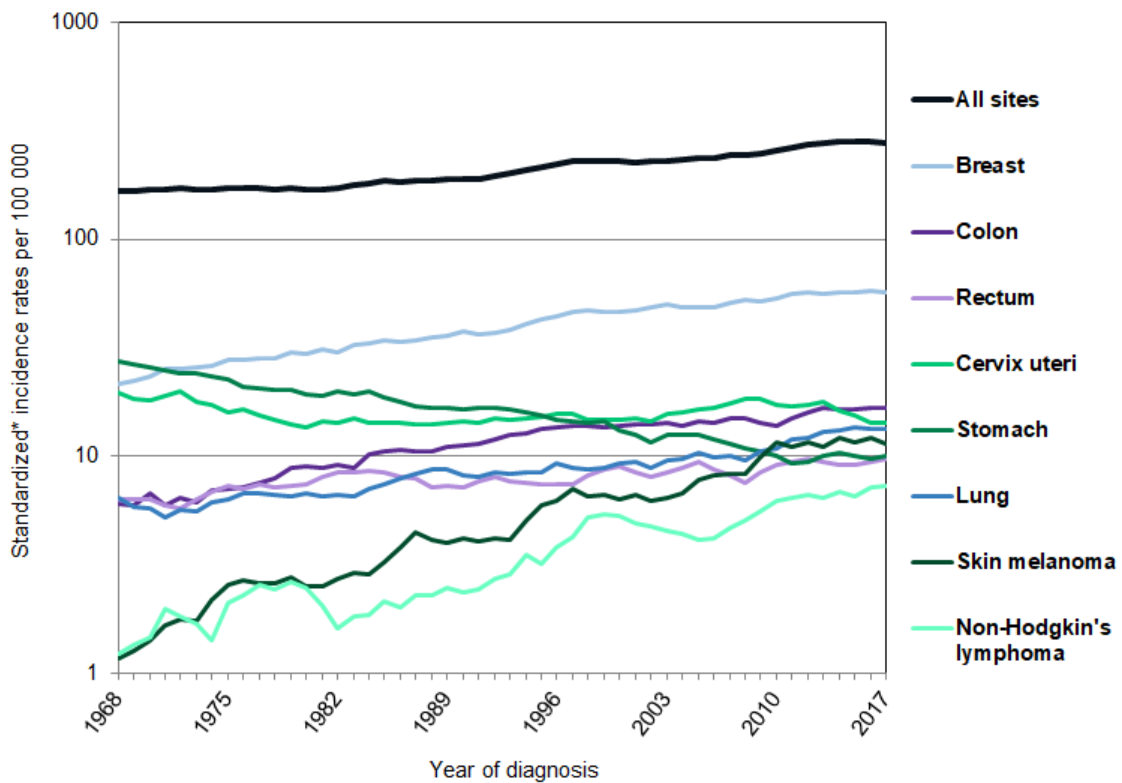
Figure 3. Number of cancer cases in Estonia, 1968-2017

Men



* Standardised to the world standard population; calculated as the three-year running average.

Women



* Standardised to the world standard population; calculated as the three-year running average.

Figure 4. Trends in age-standardized cancer incidence in Estonia, 1968-2017 (selected sites)

7 Cancer prevalence

On 31 December 2017, there were 62 073 persons (24 939 men and 37 134 women) in the population of Estonia with a life-time history of cancer and the number of prevalent cases was 68 435 (27 869 in men and 40 566 in women).

Number of persons with a cancer history has constantly increased (Figure 5) over time as a result of rising cancer incidence and improving survival.

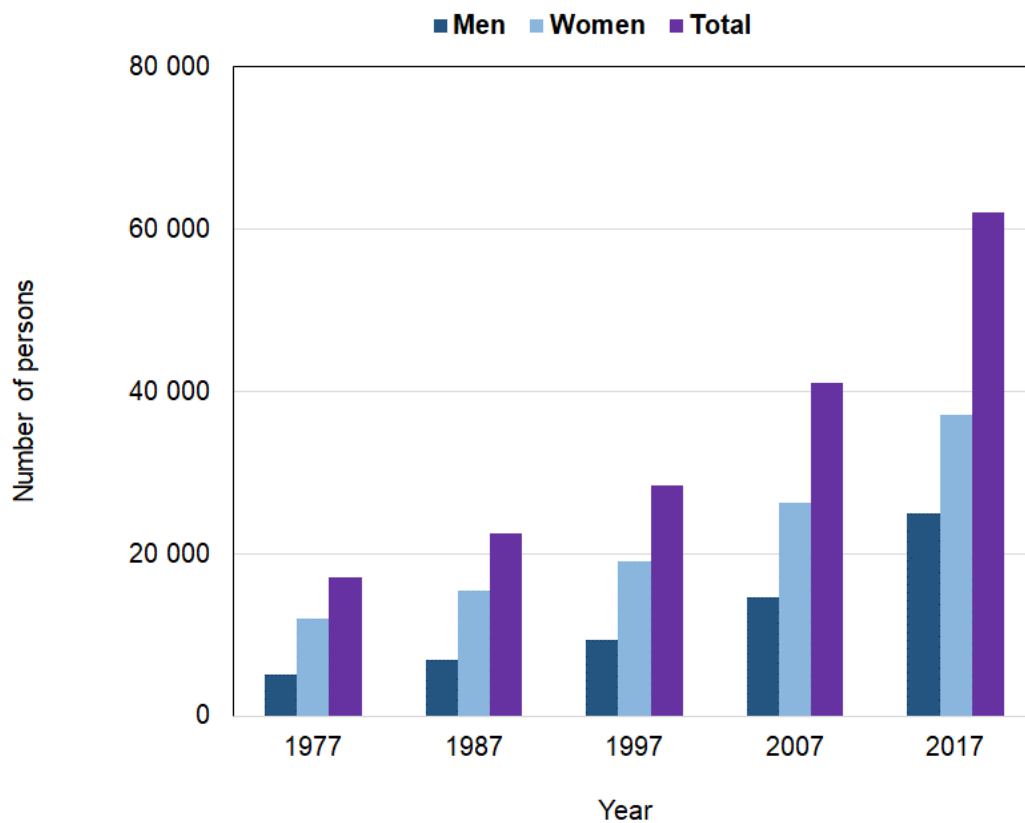


Figure 5. Number of persons with a life-time history of cancer in Estonia at the end of corresponding year, 1977-2017

8 Cancer survival

For 2012–2016, one-year and five-year relative survival ratio for all cancer cases diagnosed in Estonia was 77% and 63%, respectively.

One-year and five-year relative survival ratios by cancer site are shown in Table 8.

Figure 6 presents age-standardized five-year relative survival comparing two periods (2007–2011 vs 2012–2016). For all sites combined, survival has increased by 3 percentage units. The largest increases were seen for skin melanoma (6 percentage units), ovarian cancer (5 percentage units), and oral and pharyngeal cancer (5 percentage units).

One-year and five-year relative survival by extent of disease at diagnosis for selected sites is shown in Table 9.

Table 8. One-year and five-year relative survival ratio (%) by cancer site and gender in Estonia, 2012-2016

Cancer site	ICD-10	One-year relative survival ratio (%)			Five-year relative survival ratio (%)		
		Total	Men	Women	Total	Men	Women
All sites	C00-96	77	74	79	63	60	66
All sites but other skin	C00-96 but C44	72	70	74	56	54	57
Lip, oral cavity, pharynx	C00-14	66	61	81	42	36	61
Oesophagus	C15	33	33	32	9	9	9
Stomach	C16	47	45	49	27	25	29
Colon	C18	75	75	74	56	54	58
Rectum etc.	C19-21	79	80	79	58	57	58
Liver etc.	C22	22	25	18	6	5	6
Gallbladder etc.	C23-24	37	45	33	17	23	14
Pancreas	C25	23	21	24	7	6	8
Larynx	C32	81	80	87	61	60	74
Trachea, bronchus, lung	C33-34	38	36	43	14	13	18
Melanoma of skin	C43	93	90	95	82	78	85
Other skin	C44	101	102	101	103	105	101
Soft tissues	C48-49	69	65	73	52	52	52
Breast	C50	95	87	95	81	61	82
Cervix uteri	C53	-	-	86	-	-	67
Corpus uteri	C54	-	-	92	-	-	80
Ovary	C56	-	-	78	-	-	47
Prostate	C61	-	97	-	-	93	-
Testis	C62	-	97	-	-	95	-
Kidney	C64	79	80	79	65	64	68
Ureter, urinary bladder etc.	C65-68	79	78	80	61	59	66
Brain, central nervous system	C70-72	49	51	47	20	21	20
Thyroid gland	C73	91	89	93	87	78	91
Hodgkin's disease	C81	89	87	90	84	82	86
Non-Hodgkin's lymphoma	C82-85/96	74	75	73	58	59	57
Multiple myeloma	C90	66	69	64	40	46	37
Leukaemia	C91-95	71	76	67	54	57	51

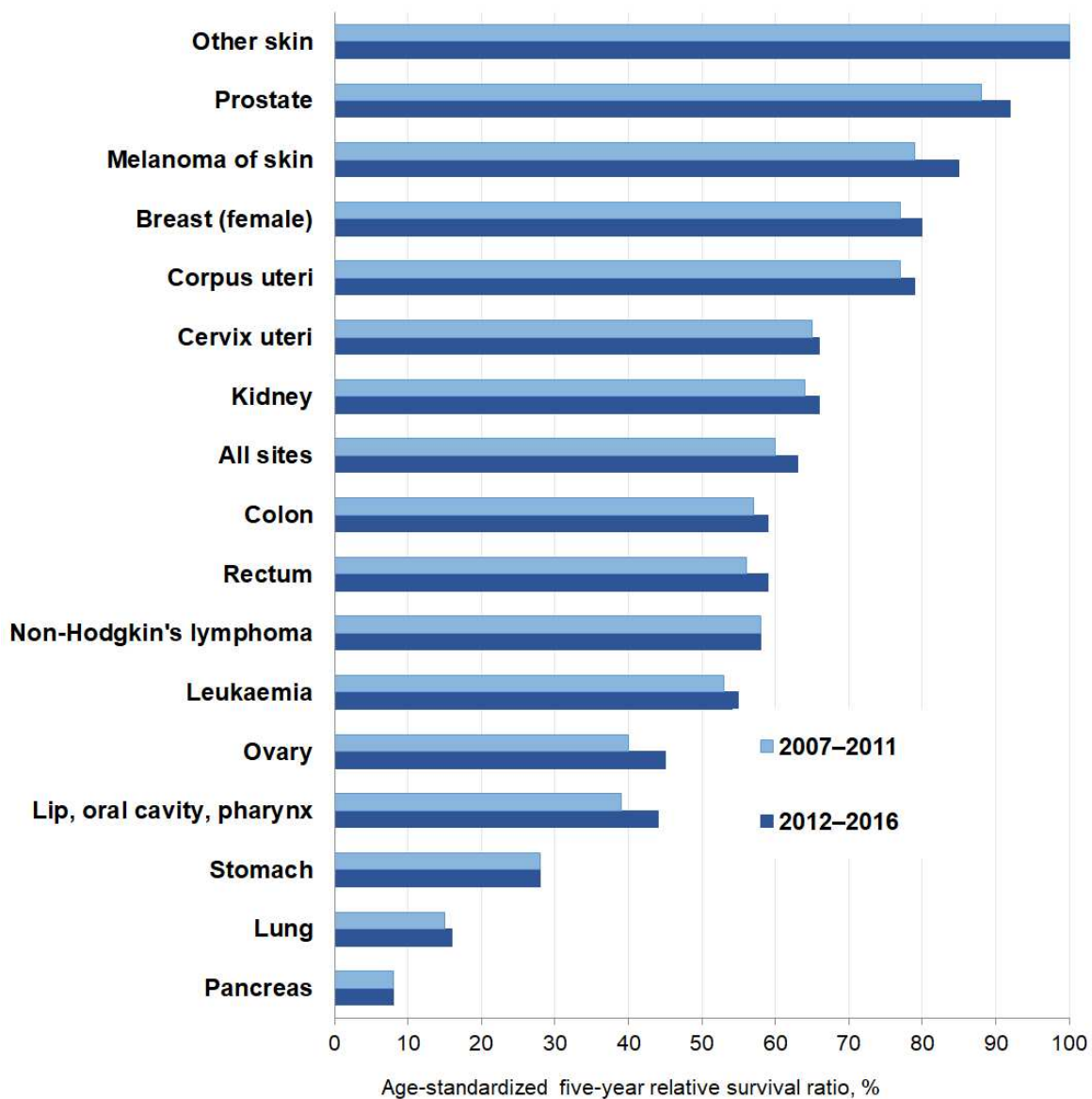


Figure 6. Age-standardized five-year relative survival ratio for most frequent cancer sites in Estonia, 2007-2011 and 2012-2016

Table 9. One-year and five-year relative survival ratio (%) by cancer site and extent of disease in Estonia, 2012–2016

Cancer site	ICD-10	One-year relative survival ratio (%)			Five-year relative survival ratio (%)		
		Localized	Regional, lymph nodes and/or adjacent tissues	Distant metastasis	Localized	Regional, lymph nodes and/or adjacent tissues	Distant metastasis
Lip, oral cavity, pharynx	C00-14	93	61	20	77	31	3
Stomach	C16	83	67	20	70	38	2
Colon	C18	91	86	45	85	66	12
Rectum etc.	C19-21	95	91	47	86	66	11
Pancreas	C25	68	47	9	39	11	1
Trachea, bronchus, lung	C33-34	88	52	15	55	17	1
Melanoma of skin	C43	100	88	30	93	57	9
Breast (female)	C50	100	97	62	97	80	16
Corpus uteri	C54	98	89	58	92	52	26
Prostate	C61	100	100	73	100	89	30
Kidney	C64	97	73	34	90	52	9